



WASH IN SCHOOLS
THREE STAR APPROACH



MENSTRUAL
HYGIENE MANAGEMENT

WinS MONITORING RESULTS PHILIPPINE S // SCHOOL YEAR 2017/2018 TO 2019/2020

WASH IN SCHOOLS

STATUS OF MENSTRUAL HEALTH

WINS NATIONAL LEARNING EXCHANGE

JULY 10-13, 2023

CRUCIAL INDICATORS FOR MHH

- Water availability
- Sanitation facilities
- Availability of sanitary pads
- Access to information on Menstrual Health



WATER AVAILABILITY



INDICATOR	2017/2018 N= 30,574	2018/2019 N= 35,005	2019/2020 N= 39,814	2020/2021 N= 44,815	2021/2022 N= 45,390
Availability of water in schools	63.0	72.2	81.8	89.6	97.3
At all school hours	55.1	60.1	59.9	63.3	68.4

- Continuous increase in water availability in schools
- Huge increase in SY 2021/22
- More than a third of the schools, however, still lack water at all school hours
- Access to water is necessary in ensuring appropriate menstrual hygiene management



SANITATION FACILITIES

	SY 2017/2018	SY 2018/2019	SY 2019/2020	SY 2020/2021	SY 2021/2022
Total no. of schools ›	30,574	35,005	39,814	44,815	45,390
Average number of students per functional toilet for female	113.14	123.87	101.40	94.00	88.0
All functional toilets are secure, private and have door with lock	80.5%	85.6%	87.4%	88.9%	91.2%
› all functional toilets have lighting	70.6%	79.0%	80.8%	82.9%	86.5%
› all functional toilets have adequate ventilation	72.1%	79.4%	81.6%	83.3%	86.7%
All exclusively female toilets have wrapping materials and trash bins for used sanitary pads	33.5%	49.3%	55.5%	63.9%	72.0%
Exclusively female toilets have a washing facility inside the toilet	23.1%	45.0%	49.4%	54.5%	60.8%
Detached toilets for girls within view of school building and people	46.3%	50.5%	54.0%	55.6%	60.1%
Has rest space for girls with menstrual discomfort	35.2%	50.1%	55.3%	61.3%	68.9%



SANITATION FACILITIES

- Huge increase in the availability of washing facility inside exclusively female toilets from **23%** in SY 2017/18 to **61%** in SY 2021/22
- Washing facility inside female toilets is important to allow girls to better manage menstrual hygiene while in schools



AVAILABILITY OF SANITARY PADS



INDICATOR	2017/2018 N= 30,574	2018/2019 N= 35,005	2019/2020 N= 39,814	2020/2021 N= 44,815	2021/2022 N= 45,390
Sanitary pads available in school	19.2%	74.7%	80.2%	82.5%	87.4%

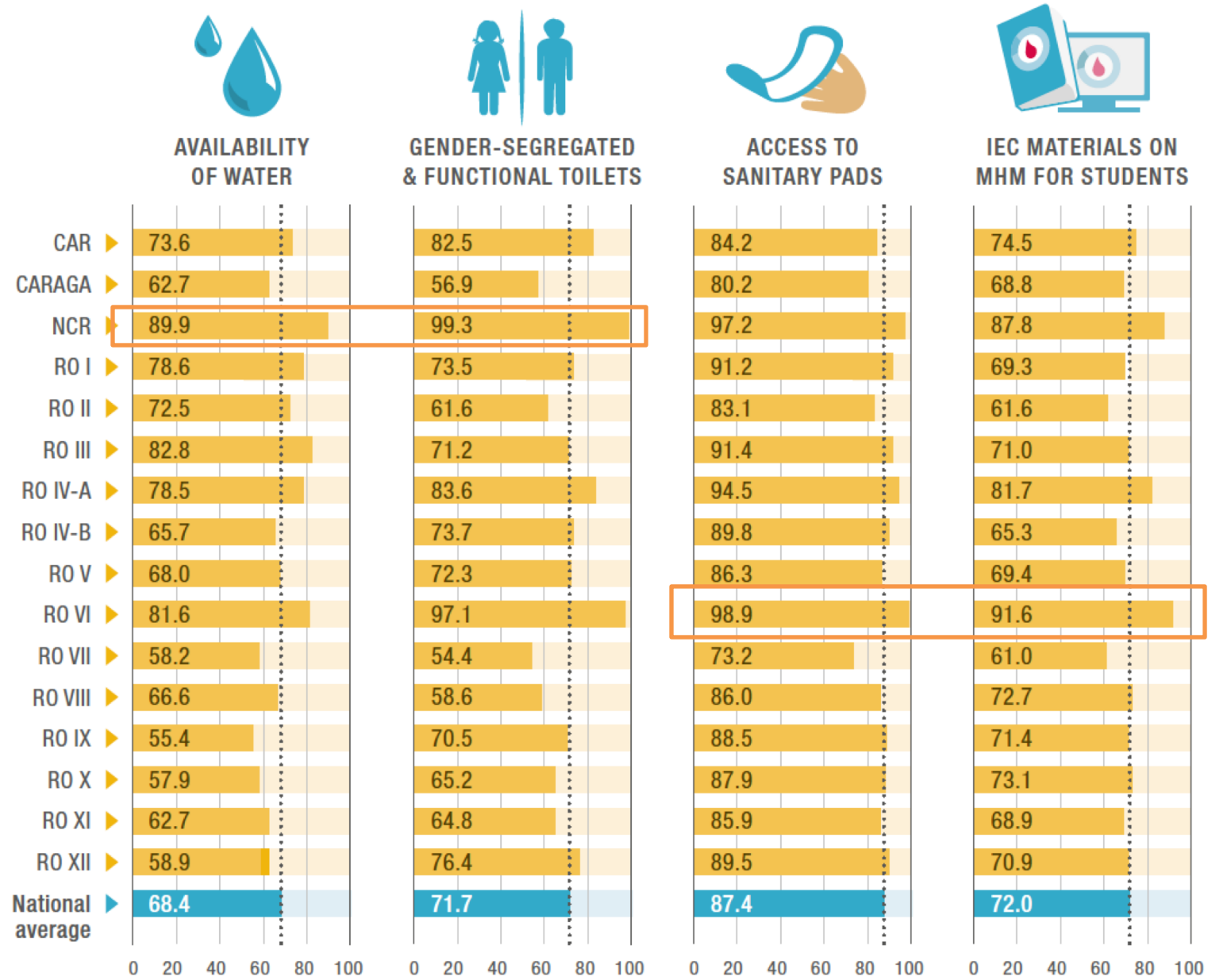
- Huge improvement in terms of access to sanitary pads can be seen from the baseline data in 2017/18 to the latest monitoring results in SY 2021/22



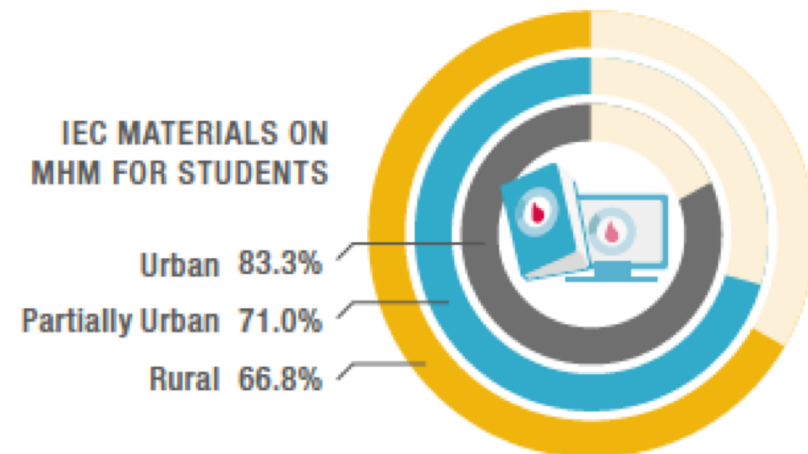
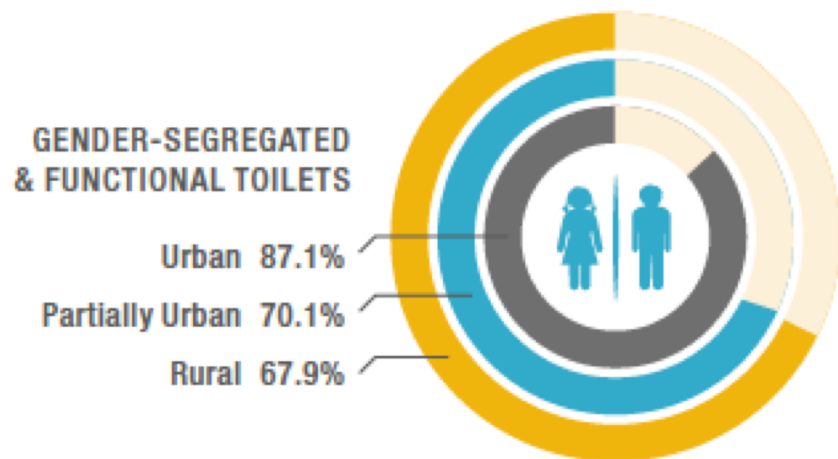
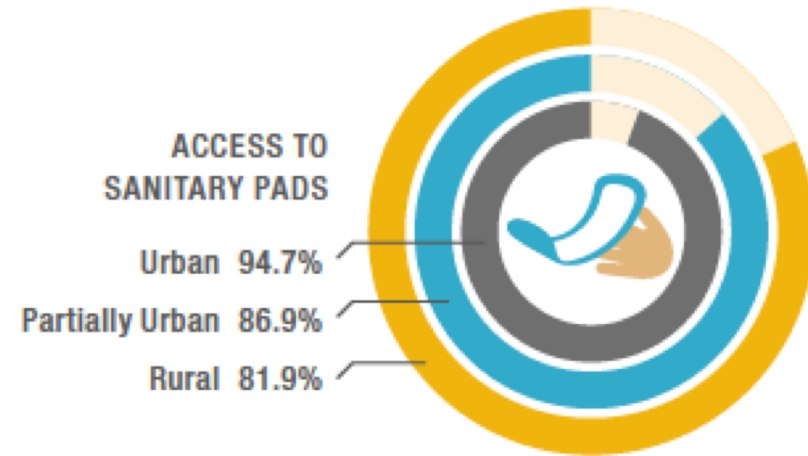
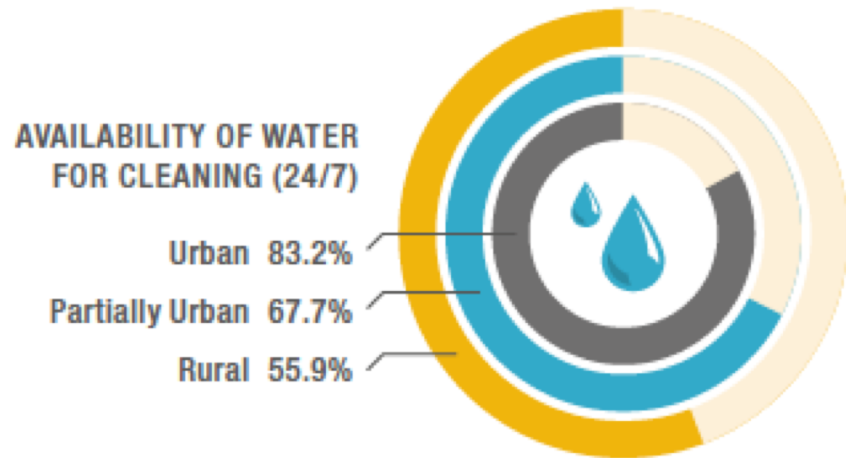
TABLE 4. ACCESS TO INFORMATION ON MHM

	SY 2017/2018	SY 2018/2019	SY 2019/2020	SY 2020/2021	SY 2021/2022
Total no. of schools ›	30,574	35,005	39,814	44,815	45,390
Has information on proper disposal of sanitary napkins in girls toilet	57.5%	70.8%	75.4%	80.0%	84.6%
Has IEC materials on Menstrual Health					
W for teachers	34.5%	45.9%	52.9%	60.8%	69.8%
› for students	36.9%	48.8%	56.0%	63.5%	72.0%
Areas where IEC materials for MHM are available					
› bulletin board	12.7%	21.0%	25.3%	31.5%	39.4%
› classrooms	30.3%	39.9%	45.2%	51.5%	58.7%
› toilets	15.9%	27.5%	34.2%	42.9%	53.2%

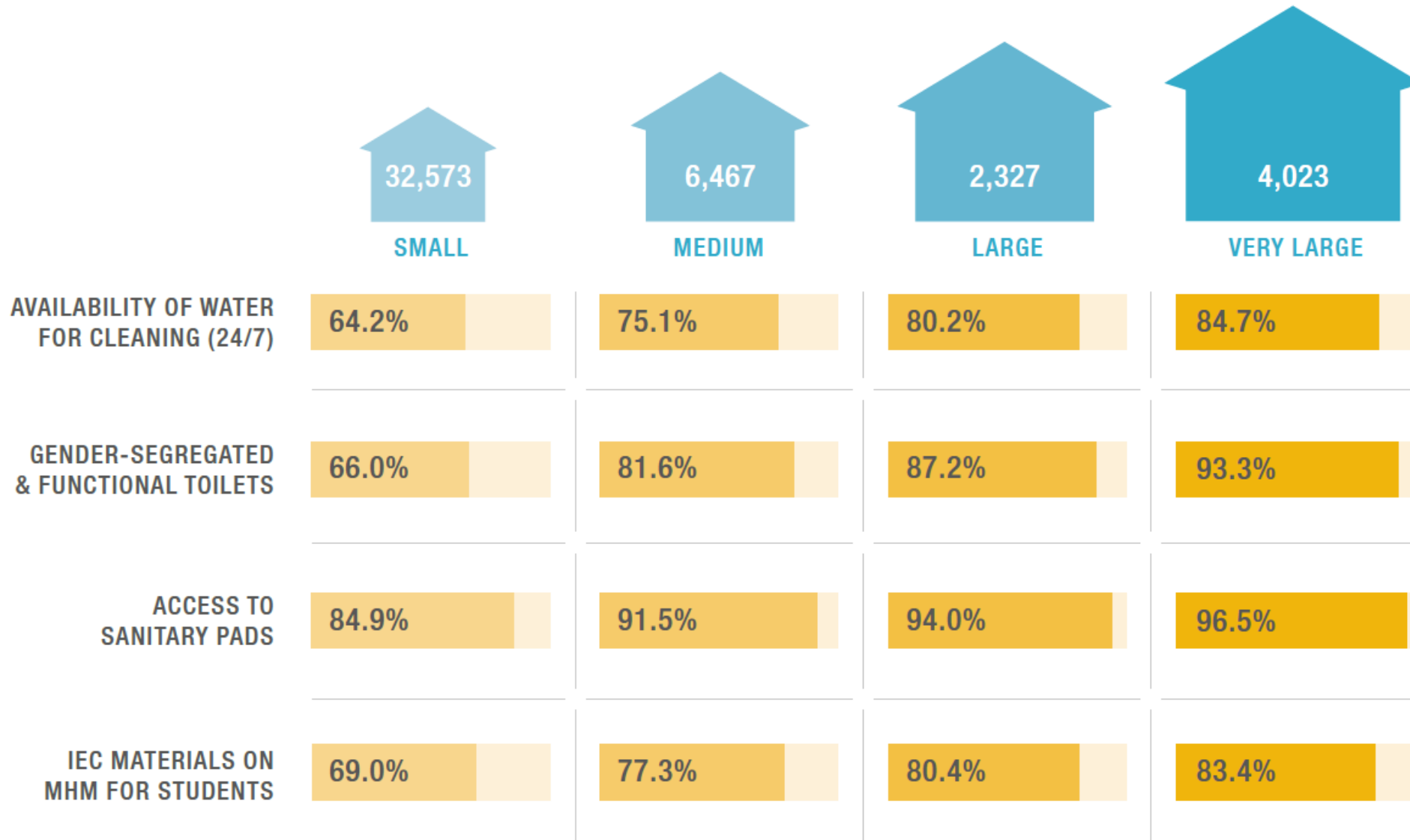
MHH INDICATORS BY REGION



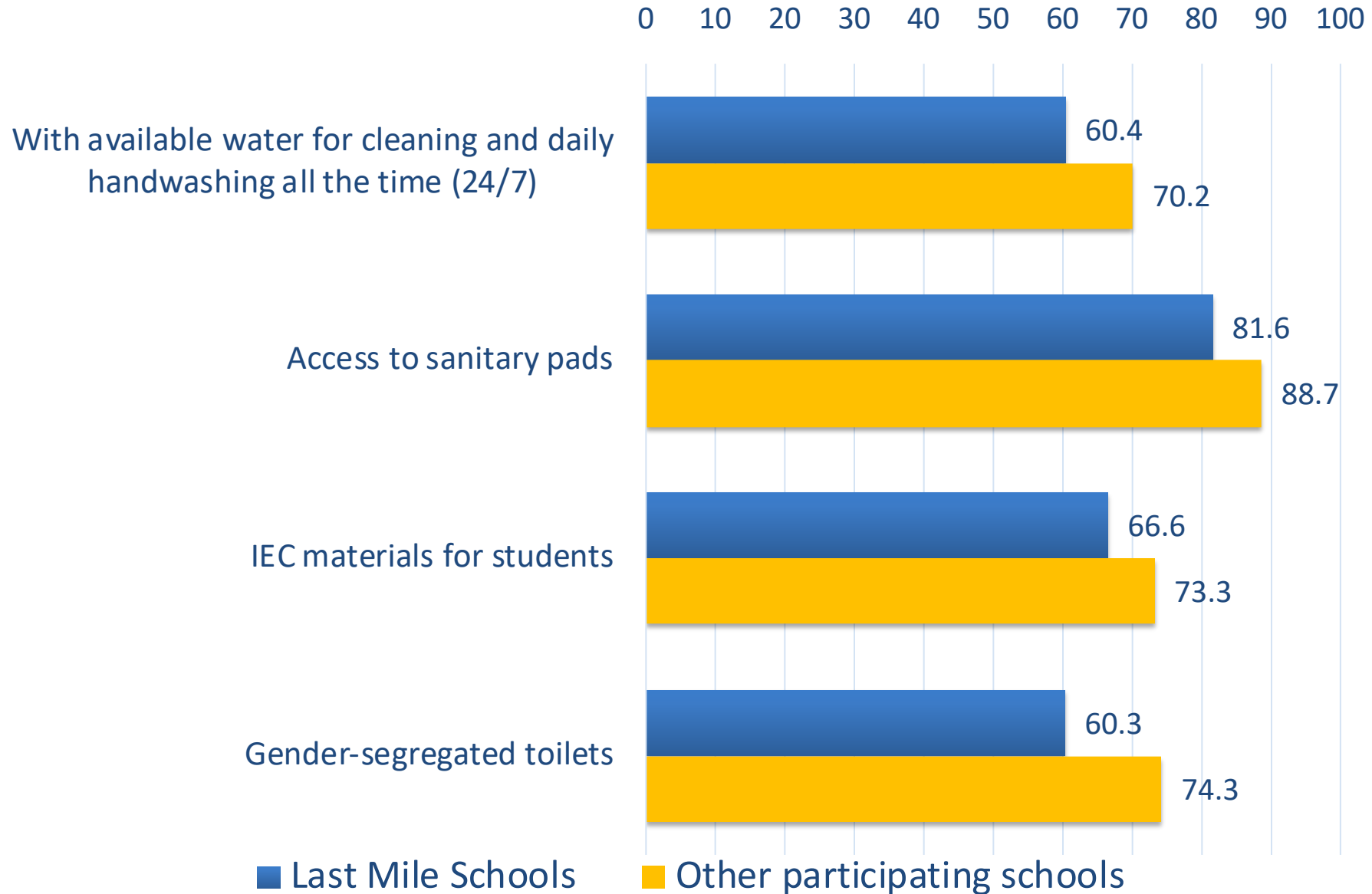
MHH INDICATORS BY DEGREE OF URBANIZATION



MHM INDICATORS BY SCHOOL SIZE (SY 2021-22)



MHH INDICATORS IN LAST MILE SCHOOLS



SUMMARY

- Continuous improvements seen in all indicators from SY 2017/18 to SY 2020/21
- Need to ensure that crucial information reach learners
- Water should be made available at all school hours to allow girls to properly manage their menstruation while in schools
- Need to ensure that toilets are clean and with privacy so that girls can change their pads with ease and with dignity



SUMMARY

- Improvements seen highlight the monitoring of standards to guide schools on which aspects need to be improved
- Building management capacities is essential in reducing the variation in compliance seen across regions, degree of urbanization of an area, and school population size.
- Massive open online courses (MOOCs) on WASH in Schools a response to the capacity development needs of DepEd's division offices and schools



SUMMARY

- Need to strengthen partnerships and collaboration with other stakeholders such as the LGUs
- Investing on menstrual health and hygiene is an important step to support girls and reduce gender gap in schools
- Advancing MHH should be a collaborative effort among various stakeholders such DepEd, LGUs, parents, and the rest of the community. Making schools menstruation-friendly institutions will require investment beyond the education sector.



Access all MHH Resources at:



https://wins.deped.gov.ph/2021/05/10/mhm_resources/

The collage features several key educational materials:

- DepED** logo and the **WASH IN SCHOOLS THREE STAR APPROACH** logo, which includes a graphic of three stars and water droplets.
- A poster titled **Growing Healthy: Things that girls need to know**, featuring illustrations of diverse young women.
- An infographic titled **"WHAT GETS MEASURED GETS DONE" MENSTRUAL HYGIENE MANAGEMENT**, which details various indicators and their corresponding actions.
- A **MAKING REUSABLE PADS** learning guide, showing step-by-step instructions for creating reusable pads with illustrations and photos.
- A cover for **MENSTRUAL HYGIENE MANAGEMENT** with the subtitle **Wins MONITORING RESULTS PHILIPPINES // SCHOOL YEAR 2017/2018 TO 2019/2020**, featuring a photo of students.

Logos for partner organizations like **giz**, **Save the Children**, and **unicef** are also visible at the bottom of the collage.