



# MAPPING THE JOURNEY OF WINS



DR. MA. CORAZON Dumlao , Chief  
BLSS- School Health Division



# INTRODUCTION TO THE DEPED WINS PROGRAM



*'in collaboration with the WinS TWG partners*



**WASH IN SCHOOLS**  
THREE STAR APPROACH



Implemented by:





## Policy Objectives

1. Ensure correct knowledge and understanding among learners of effective hygiene and sanitation projects;
2. Improve equitable access to safe water, adequate toilets, and hand washing facilities;
3. Improve hygiene and sanitation practices among the learners to enable them to develop life-long positive hygiene and sanitation behaviors;
4. Ensure that schools are kept clean and safe through school-based solid waste management, proper drainage, the elimination of breeding grounds for mosquitoes to prevent vector-borne diseases, and strengthen food safety ; and
5. Engage public and private partners for program implementation and sustainability.



Sanitation



Deworming





# KEY COMPONENTS OF WASH IN SCHOOLS

The DepED WASH in Schools Program has eight (8) components, namely:

- 1.Oral hygiene and proper handwashing;
- 2.Provision of safe and adequate water supply;
- 3.Provision of toilet, handwashing, and drainage facilities;
- 4.Environmental sanitation (including the elimination of breeding grounds for mosquitoes that carry the dengue virus) and solid waste management;
- 5.Food sanitation;
- 6.Menstrual Hygiene Management;
- 7.Deworming; and
- 8.Hygiene and sanitation education







# WASH IN SCHOOLS: ADDRESSING SDGs IN EDUCATION AND HEALTH



Sustainable Development Goals 4 & 6 provided clear targets and indicators that led to the creation of a national WinS policy (DepEd Order No. 10, Series of 2016) and the benchmarking of national standards.

SDG	SDG TARGETS AND INDICATORS
 <b>Goal 6: Ensure availability and sustainable management of water and sanitation for all</b>	<b>6.1</b> By 2030, achieve <b>universal</b> and equitable access to safe and affordable drinking water <b>for all</b> <b>6.2</b> By 2030, achieve access to adequate and equitable sanitation and hygiene for all and end open defecation, paying special attention to the needs of women and <b>girls</b> and those in vulnerable situations
 <b>Goal 4: Ensure inclusive and quality education for all and promote lifelong learning</b>	<b>4.a</b> Build and upgrade education facilities that are child, disability and gender sensitive and provide safe, non-violent, inclusive and effective learning environments <b>for all</b> <b>4.a.1</b> Proportion of schools with access to: (a) electricity; (b) the internet for pedagogical purposes; (c) computers for pedagogical purposes; (d) adapted infrastructure and materials for students with disabilities; <b>(e) basic drinking water; (f) single-sex basic sanitation facilities; and (g) basic handwashing facilities</b> (as per the WASH indicator definitions)



# INTRODUCTION TO THE DEPED WINS PROGRAM

- What is in place?
- How does it work?
- What are the drivers for DepED WinS implementation?

**STAR CRITERIA**

**HYGIENE**

	★ ★	★ ★ ★
<b>HANDWASHING</b>		
Supervision	Daily SUPERVISED group handwashing with soap for all children is led by a mix of teachers and students.	Daily SUPERVISED group handwashing with soap for all children is led by student leaders.
Supply	Regular supply of soap for handwashing.	Regular supply of soap for handwashing.
Facility	Pupil to group handwashing facility with soap ratio of 1:200 for one shift.	Pupil to group facility with soap ratio of 1:100 for one shift.
Facilities		There are individual handwashing facilities with soap in strategic areas in the school (e.g. near canteen/dining areas, play areas and toilet).
Practice		The practice of individual handwashing with soap is done during critical times.
<b>TOOTHBRUSHING</b>		
Supervision	Daily SUPERVISED activity of toothbrushing with fluoride toothpaste for all children is led by a mix of teachers and students.	Daily SUPERVISED activity of toothbrushing with fluoride toothpaste for all children is led by student leaders.
Supply	Regular supply of fluoride toothpaste for the toothbrushing activity.	Regular supply of fluoride toothpaste for the toothbrushing activity.
<b>ENABLERS</b>		
Policy	Repair and maintenance requirements are reflected in the School Improvement Plan (SIP) and Annual Improvement Plan (AIP).	Repair and maintenance requirements are reflected in the School Improvement Plan (SIP) and Annual Improvement Plan (AIP).
Funding	Soap, toothbrush and toothpaste are provided by the school through DepEd Funds complemented by external partners.	Soap, toothbrush and toothpaste are provided by the school through DepEd Funds complemented by external partners.
<b>MENSTRUAL HYGIENE MANAGEMENT (MHM)</b>		
		MHM that is secure, private and comfortable (not necessarily in the CIL).

**DepED**  
DEPARTMENT OF EDUCATION

**WASH IN SCHOOLS**  
THREE STAR APPROACH

**NATIONAL GUIDELINES**  
WHAT YOU NEED TO KNOW

**OPERATIONAL STANDARDS**

**WATER**

★	★ ★	★ ★ ★
Safe drinking water is not provided by the school. Children are required to bring their own drinking water.	Safe drinking water is provided by the school but supply is not regular.	Safe drinking water is provided for free for all children in the school at all times.
The school coordinates with the relevant agency/office to test the quality of water.	The quality of water is tested <b>once every calendar year</b> in coordination with the relevant agency/office.	The quality of water is tested <b>more than once every calendar year</b> in coordination with the relevant agency/office.
Regardless of source, water for cleaning is available <b>only for certain days</b> of the week.	Regardless of source, water for cleaning is available on a <b>daily basis but only on certain hours of the day</b> .	Regardless of source, water for cleaning is available on a <b>daily basis in all school hours</b> .

**DEWORMING**

★	★ ★	★ ★ ★
Deworming is done <b>semi-annually</b> in the presence of a health personnel, in coordination with DOH, and with parent's consent.	Deworming is done <b>semi-annually</b> in the presence of a health personnel, in coordination with DOH, and with parent's consent.	Deworming is done <b>semi-annually</b> in the presence of a health personnel, in coordination with DOH, and with parent's consent.
50-74 % of school students were dewormed.	75-84 % of school students were dewormed.	At least 85 % of school students were dewormed.

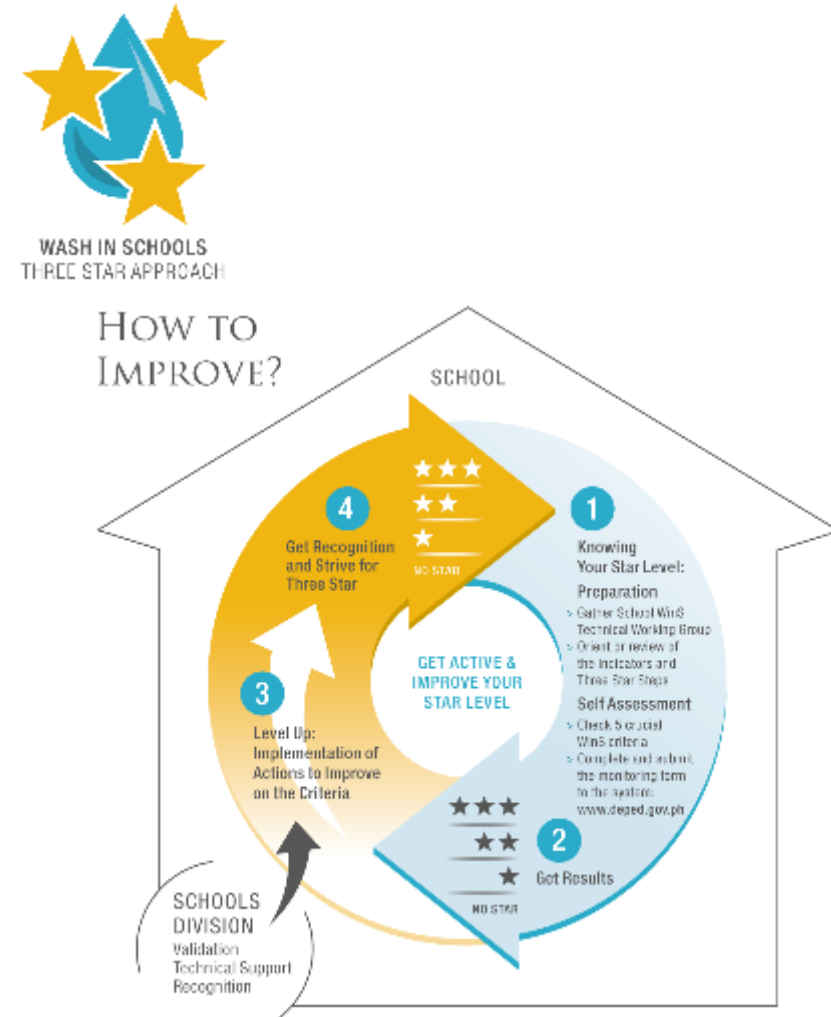
**HEALTH EDUCATION**

★	★ ★	★ ★ ★
IEC materials are present <b>only in the schoolboard or wall</b> .	IEC materials are present in <b>classrooms and strategic places</b> (e.g. canteen, play areas, toilets, handwashing facilities, etc.).	IEC materials are present in <b>classrooms and strategic places</b> (e.g. canteen, play areas, toilets, handwashing facilities, etc.).
There are <b>organized teams and accountable units</b> to promote WinS (e.g. TWGs, student clubs).	There are <b>organized teams and accountable units</b> to promote WinS (e.g. TWGs, student clubs).	There are <b>organized teams and accountable units</b> to promote WinS (e.g. TWGs, student clubs).
WinS is <b>part of INSET</b> .	WinS is <b>part of INSET</b> .	WinS is <b>part of INSET</b> .
	Advocacy is done during <b>GPTA assembly</b> .	There are <b>planned and organized activities</b> for parents/stakeholders to learning and advocating WinS.



# PH WINS USES THREE-STAR APPROACH (TSA)

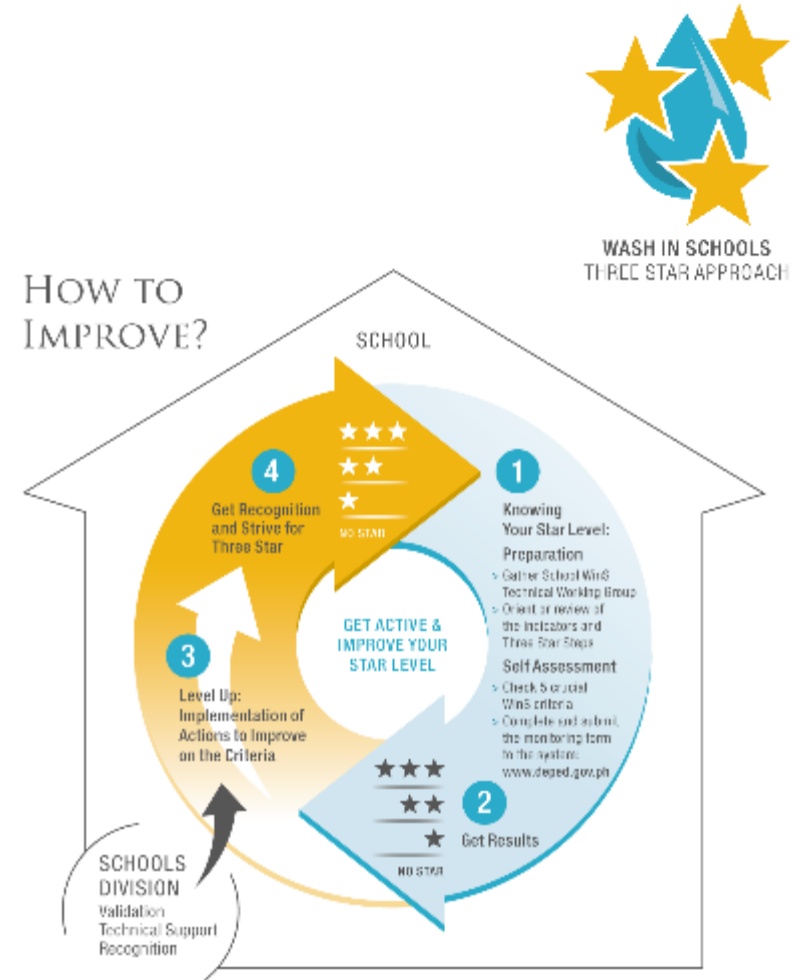
- Three Star Approach (TSA) is a stepwise approach to reach national standards by defining national priorities, setting benchmarks, and rewarding achievements.
- The DepEd uses online monitoring system allowing schools to upload their own assessment of WinS status.





# IMPACTS OF HAVING WINS DATA

- WinS data as basis and criteria for recognition systems
- WinS data was used for budget hearings/ defense for fund allocation
- WinS data revealed gaps in building design and were addressed accordingly
- National / Regional/ Local reporting & advocacy for WinS
- Division-level awareness to address WinS and improve the learning environment
- Accountability for WinS under School-Based Management





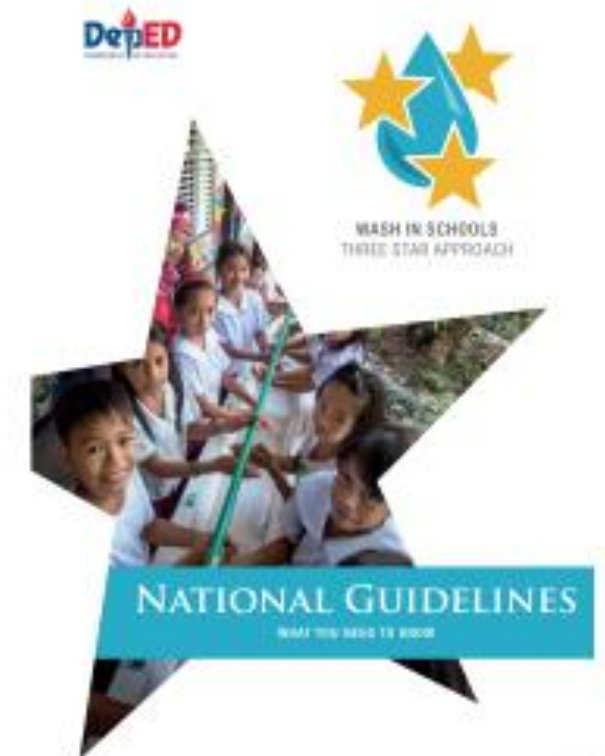
# THREE-STAR APPROACH MATRIX IN THE PHILIPPINES

★★★ Three Star School Meeting National Standards	<ul style="list-style-type: none"><li>› School facilities and systems upgraded to meet national standards</li></ul>
★★ Two Star School Incremental Improvements	<ul style="list-style-type: none"><li>› Hygiene education and facilities to promote handwashing with soap after toilet use</li><li>› Improved Sanitation facilities, plus facilities and education for menstrual hygiene management</li><li>› Low-cost point-of-use water treatment introduced in schools.</li></ul>
★ One Star School Daily Routines to Promote Healthy Habits	<ul style="list-style-type: none"><li>› Daily supervised group handwashing with soap, normally before the school meal</li><li>› Daily supervised cleaning of toilets, and provision of water and soap (at least one usable toilet for girls and one for boys); no open defecation</li><li>› Daily supervised use of drinking-water bottles by all children</li></ul>
No Star School The Existing Situation for Many Schools	<ul style="list-style-type: none"><li>› Limited or no hygiene promotion</li><li>› May or may not have WASH infrastructure</li></ul>



## DepED Philippines National Guidelines for WASH in Schools - Three Star Approach

THREE STAR CRITERIA			SANITATION			WATER			DEWORMING			HEALTH EDUCATION		
★	★★	★★★	★	★★	★★★	★	★★	★★★	★	★★	★★★	★	★★	★★★
<b>HYGIENE</b> Daily SUPERVED group handwashing with soap for all children is led by <b>teachers</b> . Regular supply of soap for handwashing. At least one functional group handwashing facility with soap.			<b>TOILETS</b> The overall ratio to toilet seat ratio is 100 students or higher and there are at least two functional and clean toilets that are gender segregated. Toilets are secure, private, with door and lock, have lighting, adequate ventilation and disposing materials for used pads. There is a handwashing facility with soap within or near the toilets. There is a facility for washing 10 at least one female toilet for 1000.			<b>WATER</b> Safe drinking water is not provided by the school. Children are required to bring their own drinking water. The school coordinates with the relevant agencies to test the quality of water. Regardless of source, water for drinking is available only for certain days of the week.			<b>DEWORMING</b> Deworming is done semi-annually in the presence of a health personnel, in coordination with DSH, and with parent's consent. 50-74% of school students were dewormed.			<b>HEALTH EDUCATION</b> EC materials are present only in the schoolyard or wall. There are organized teams and accountable units to promote WASH (e.g. TWGS, student clubs). WASH is part of MEET. Advocacy is done during UPN assemblies. WASH is part of the extra-curricular program of students.		
<b>TOOTHBRUSHING</b> Daily SUPERVED activity of toothbrushing with fluoride toothpaste for all children is led by <b>teachers</b> . Regular supply of fluoride toothpaste for the toothbrushing activity.			<b>WASTE MANAGEMENT</b> No burning of waste. Segregated trash bins with cover are available in all classrooms. Waste segregation is practiced. No garbage collection service BOP school has segregated facility for biodegradable waste and safe disposal of non-biodegradable waste such as properly covered <b>plastic</b> (e.g. BOP). Functional appts tank is available for all toilets. Functional drainage from kitchen and wash areas to ensure that there is no stagnant water in the school.			<b>WATER</b> Safe drinking water is provided by the school but supply is not regular. The quality of water is tested once every calendar year in coordination with the relevant agencies. Regardless of source, water for drinking is available on a daily basis but only on certain hours of the day.			<b>DEWORMING</b> Deworming is done semi-annually in the presence of a health personnel, in coordination with DSH, and with parent's consent. 75-84% of school students were dewormed.			<b>HEALTH EDUCATION</b> EC materials are present in classrooms and strategic places (e.g. corridor, play area, toilet, handwashing facilities, etc.). There are organized teams and accountable units to promote WASH (e.g. TWGS, student clubs). WASH is part of MEET. Advocate WASH learning/ instructional materials in support of WASH in the 4 to 12 curriculum. There are planned and organized activities for parents/teachers for learning and advocating WASH. WASH is part of the extra-curricular program of students.		
<b>TOOTHBRUSHING</b> Daily SUPERVED activity of toothbrushing with fluoride toothpaste for all children is led by <b>teachers and students</b> . Regular supply of fluoride toothpaste for the toothbrushing activity.			<b>WASTE MANAGEMENT</b> No burning of waste. Segregated trash bins with cover are available in all classrooms and toilets. Waste segregation is practiced. Garbage is collected at least once a week (BOP school has segregated facility for biodegradable waste and safe disposal of non-biodegradable waste such as properly covered <b>plastic</b> (e.g. BOP). Functional appts tank is available for all toilets. Functional drainage from kitchen and wash areas to ensure that there is no stagnant water in the school.			<b>WATER</b> Safe drinking water is provided by the school but supply is not regular. The quality of water is tested once every calendar year in coordination with the relevant agencies. Regardless of source, water for drinking is available on a daily basis but only on certain hours of the day.			<b>DEWORMING</b> Deworming is done semi-annually in the presence of a health personnel, in coordination with DSH, and with parent's consent. 75-84% of school students were dewormed.			<b>HEALTH EDUCATION</b> EC materials are present in classrooms and strategic places (e.g. corridor, play area, toilet, handwashing facilities, etc.). There are organized teams and accountable units to promote WASH (e.g. TWGS, student clubs). WASH is part of MEET. Advocate WASH learning/ instructional materials in support of WASH in the 4 to 12 curriculum. There are planned and organized activities for parents/teachers for learning and advocating WASH. WASH is part of the extra-curricular program of students.		
<b>ENGLISH</b> Repair and maintenance requirements are reflected in the School Improvement Plan (SIP) and Annual Improvement Plan (AIP). Soap, toothbrush and toothpaste are provided by the school through <b>DepEd funds</b> complemented by <b>external partners</b> . Sanitary pads are accessible in the school.			<b>FOOD SAFETY</b> All food handlers are oriented and practice food safety measures.			<b>FOOD SAFETY</b> All food handlers should have a health certificate and for schools with canteen, an updated sanitary permit.			<b>FOOD SAFETY</b> All food handlers should have a health certificate and for schools with canteen, an updated sanitary permit.			<b>FOOD SAFETY</b> All food handlers should have a health certificate and for schools with canteen, an updated sanitary permit.		
<b>MENTOR HYGIENE MANAGEMENT (MHW)</b> Sanitary pads are accessible in the school.			<b>FOOD SAFETY</b> All food handlers should have a health certificate and for schools with canteen, an updated sanitary permit.			<b>FOOD SAFETY</b> All food handlers should have a health certificate and for schools with canteen, an updated sanitary permit.			<b>FOOD SAFETY</b> All food handlers should have a health certificate and for schools with canteen, an updated sanitary permit.			<b>FOOD SAFETY</b> All food handlers should have a health certificate and for schools with canteen, an updated sanitary permit.		







- **Online WinS Monitoring**



# WinS MONITORING

WALKER • SKIN • ALCOHOL • HYGIENE • JEWELRY • WEAPONS • HEALTH EDUCATION



## DepED

DEPARTMENT OF EDUCATION

YOUR SELECTION - SCHOOL YEAR: 2018-19 // ALL SCHOOLS // RO-IVA // MULTIPLE DIVISIONS

WELCOME. Please select the region, division and school type you are interested in first.

**SCHOOL LEVEL**

- ☐ School All
- ☐ Elementary
- ☐ Secondary

**REGION**

- ☐ I - Ilocos
- ☐ II - Cebu
- ☐ III - MIMAROPA
- ☐ IV - A
- ☐ V - B
- ☐ VI - I
- ☐ VII - A
- ☐ VIII - B
- ☐ IX - A
- ☐ X - B
- ☐ XI - A
- ☐ XII - B

**DIVISION**

- ☐ Abulog, All
- ☐ Antipolo City
- ☐ Baguio City
- ☐ Cagayan
- ☐ Cagayan City
- ☐ Davao City
- ☐ Davao del Sur
- ☐ Davao del Norte
- ☐ Davao del Sur
- ☐ Davao del Norte
- ☐ Davao del Sur
- ☐ Davao del Norte
- ☐ Davao del Sur
- ☐ Davao del Norte
- ☐ Davao del Sur

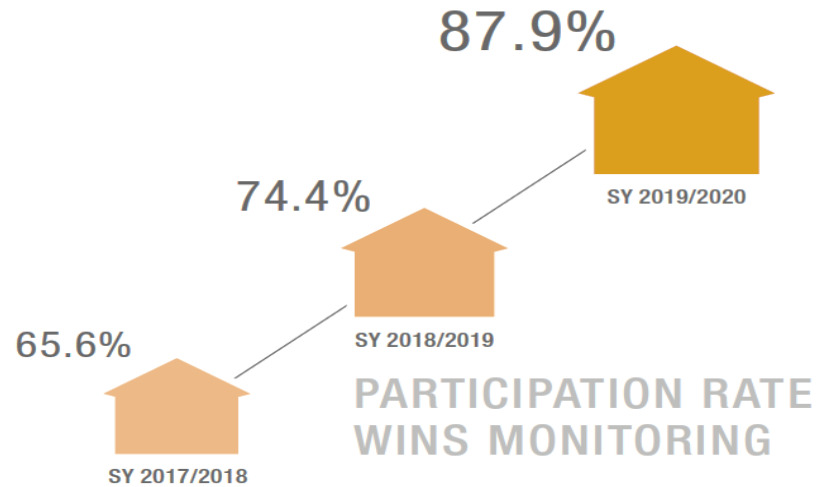
**CATEGORY**

- ☐ NUMBER OF SCHOOLS
- ☐ RISK TOLERANCE OF SCHOOLS
- ☐ TSA RATING
- ☐ COMPLIANCE TO ALL INDICATORS
- ☐ COMPLIANCE TO THE 5 CRITICAL INDICATORS
- ☐ WIN-S IMPLEMENTABLES
- ☐ SCORING POINTS OR RATING
- ☐ AQI

[illegible]



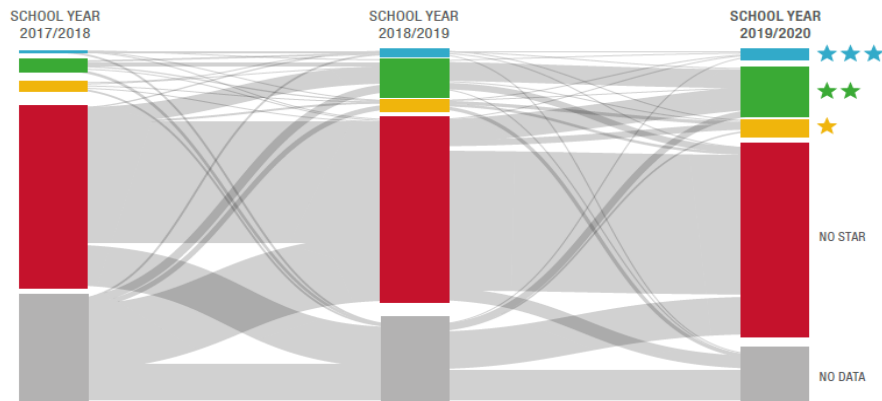
## SELECTED RESULTS OF DEPED WINS MONITORING SY 2019/2020



- ✓ Increased School Participation Rate
- ✓ Improved Compliance to 3-Star WASH in Schools Indicators

The number of schools reaching the national WinS standards has increased dramatically from only 41 schools at the baseline to nearly a thousand in SY 2019/20.

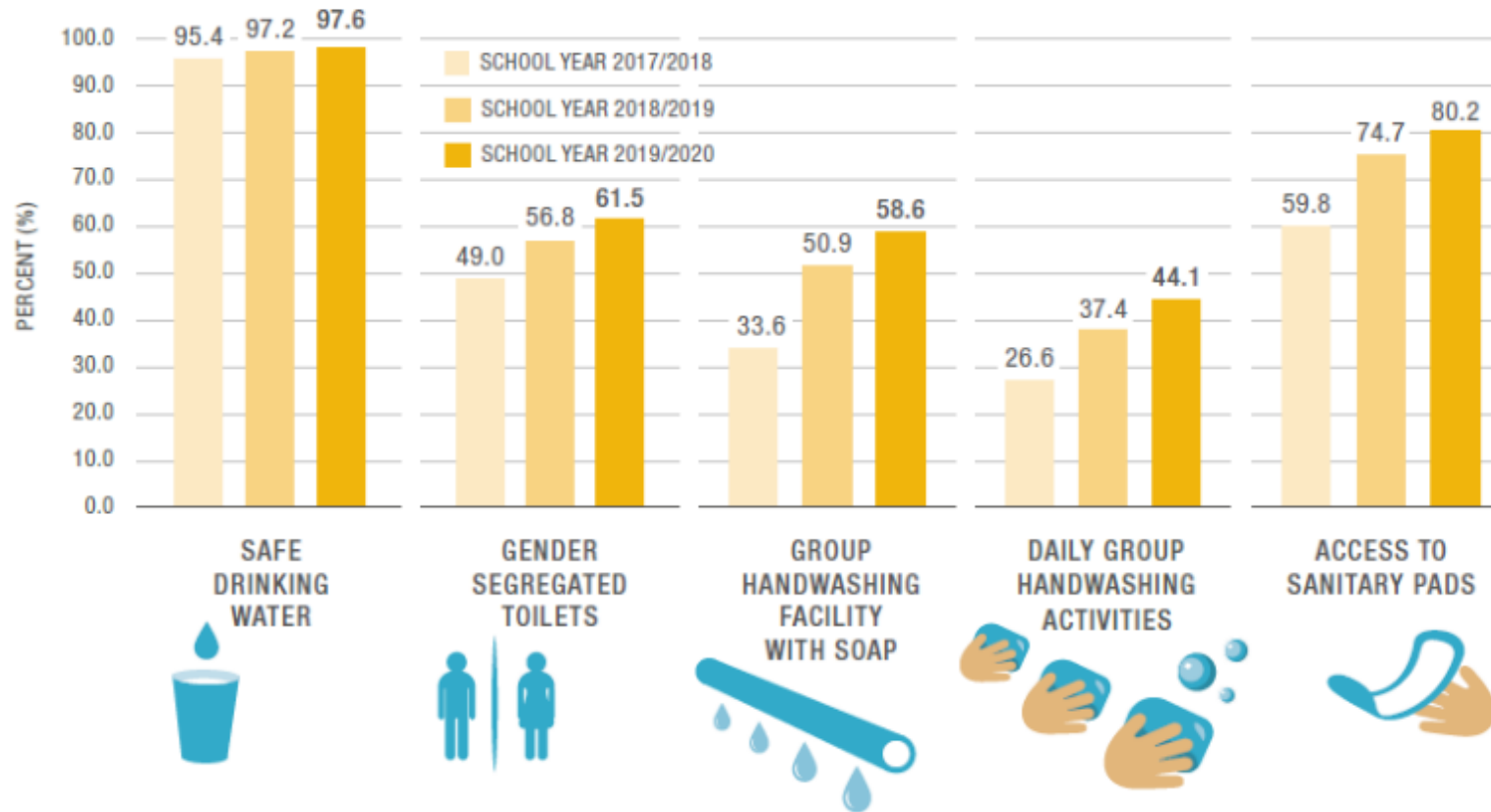
FIGURE 5. CHANGES IN THE OVERALL WinS STATUS OF SCHOOLS OVER THE MONITORING PERIOD





# SELECTED RESULTS OF DEPED WINS MONITORING SY 2019/2020

FIGURE 1. COMPLIANCE TO THE FIVE CRUCIAL INDICATORS





## • WinS in DepEd's Learning Continuity Plan

- *Preparation of school facilities for potable water and handwashing*
- *Compliance to Required Health Standards in Schools*
- *WinS Capacity Building for Teachers and School Heads*

### Status of Implementation

Activity/Program	Dates/Period
<b>Enrollment</b> <ul style="list-style-type: none"> <li>Remote enrollment for the first two weeks of June</li> <li>Enrollment kiosks or desks in the schools/barangays will be set up where parents who have no access to any virtual platforms can physically enroll their children on the third and fourth week of June. Strict adherence to health standards will be followed</li> <li>Learner Enrollment and Survey Form to be accomplished to generate learner and household information important for programming of learning delivery modalities.</li> </ul>	June 1 to 30
<b>Brigada Eskwela and Oplan Balik Eskwela</b> <ul style="list-style-type: none"> <li>Reconfigured to jointly assist the implementation of BE-LCP, pursuant to DepEd Memo no. 53, 2020 titled Joint Implementing Guidelines on the 2020 Brigada Eskwela and Oplan Balik Eskwela.</li> </ul>	June 1 to August 29

### Roadmap to Readiness

Activity/Program	Dates/Period
<b>Safe Back to Schools (when face-to-face classes is already safe/allowed)</b> <ul style="list-style-type: none"> <li>Policy issuance on Required Health Standards in schools</li> <li>Disinfection of schools</li> <li>Strict adherence to the standards set in DO No. 10, s. 2016 titled Policy and Guidelines for the Comprehensive Water, Sanitation, and Hygiene in Schools (WINS)</li> <li>Replacement of ceilings of classrooms build from 2014-2019</li> <li>Repair/rehabilitation of calamity-related damages</li> </ul>	<ul style="list-style-type: none"> <li>June onwards and as safety/national policy/budget will allow</li> </ul>



## Capacity Building for Division Officers, School Leaders and Teachers, and Information Dissemination

- WINS Massive Open Online Courses in partnership with SEAMEO Innotech
  - ✓ *Leading WinS*
  - ✓ *Accelerating WinS*
- Webinars in partnership with the WINS TWG Group (GIZ, Save the Children, Unicef)
  - ✓ *Dashboard Orientation with DepEd Field Engineers*
  - ✓ *MHM Day Public Webinar*
  - ✓ *Webinars conducted on LCP, WASH at Home, Integrating WASH in Learning by UNICEF, SCP*
  - ✓ *WinS Webinars for Region 4A and NCR*





## DepEd TV Broadcasts in Support of WinS

Global Handwashing Day

World Toilet Day

SEAMEO and other Talks


- SEAMEO Recfon
- WASH in ECCD





# REQUIRED HEALTH STANDARDS

- DepEd Order no. 14, S. 2020  
**Guidelines on the Required Health Standards in Basic Education Offices and Schools**



Republic of the Philippines  
**Department of Education**

25 JUN 2020

DepEd ORDER  
No. 014 s. 2020

**GUIDELINES ON THE REQUIRED HEALTH STANDARDS  
IN BASIC EDUCATION OFFICES AND SCHOOLS**

To: Undersecretaries  
Assistant Secretaries  
Minister, Basic, Higher and Technical Education, BARMM  
Bureau and Service Directors  
Regional Directors  
Schools Division Superintendents  
Public and Private Elementary and Secondary School Heads  
All Others Concerned

1. The Department of Education (DepEd) is committed to ensure safe educational continuity amidst the challenges of COVID-19. Learning opportunities must be provided to give hope and stability, contribute to the normalization of activities in the country, and facilitate development of our learners and bring normalcy to their lives.

2. In the provision of learning opportunities, the health and safety of our learners and teaching and non-teaching personnel are of utmost importance and must be protected at all times.

3. To ensure the safe return to schools and DepEd offices when allowed by the Department of Health (DOH), the Inter-Agency Task Force for the Management of Emerging Infectious Diseases (IATF), or the Office of the President, DepEd issues the enclosed **Guidelines on the Required Health Standards in Basic Education Offices and Schools** (Enclosure No. 1) for the guidance of all learners, teachers, and nonteaching personnel nationwide. The specific **measures for COVID-19 mitigation in schools and offices** are detailed in Enclosure No. 2 and Enclosure No. 3, respectively.

4. The guidelines and the specific interventions are primarily based on the DOH Administrative Order No. 2020-0015 or the *Guidelines on the Risk-Based Public Health Standards for COVID-19 Mitigation*, cited by the IATF to aid all sectors in all settings to implement non-pharmaceutical interventions.

5. The DepEd Central Office (CO), Regional Offices (ROs), Schools Division Offices (SDOs) and all public and private elementary and secondary schools/community learning centers (CLCs) are mandated to adopt the guidelines on the required health standards and implement the specific interventions for COVID-19 mitigation. Other measures may be instituted, guided by the following principles laid out in the DOH Administrative Order No. 2020-0015:

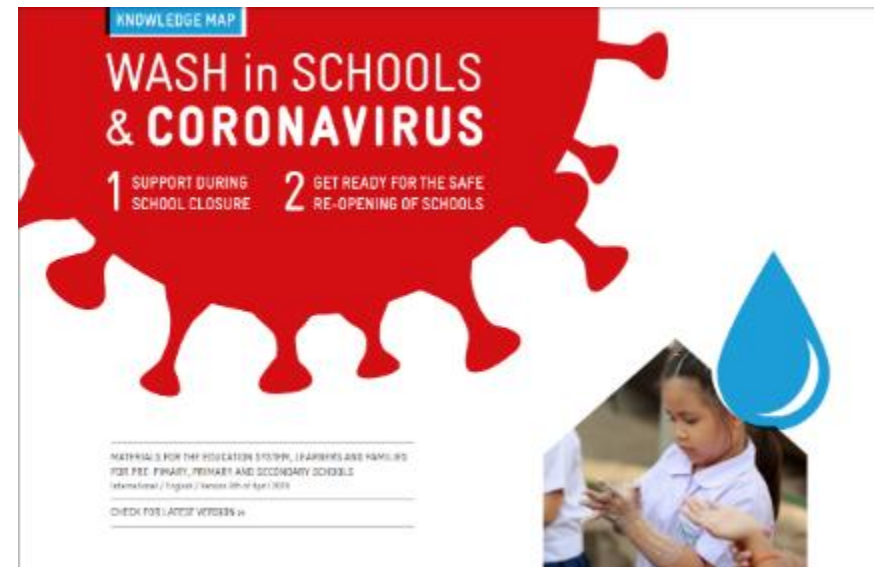
a. Shared accountability

i. All efforts shall espouse the government's strategic directions of national government-enabled, local government-led, and people-centered response to the COVID-19 health event

DepEd Complex, Meralco Avenue, Pasig City 1600 8633-7208/8633-7228/8632-1361 8636-4876/8637-6209 www.deped.gov.ph



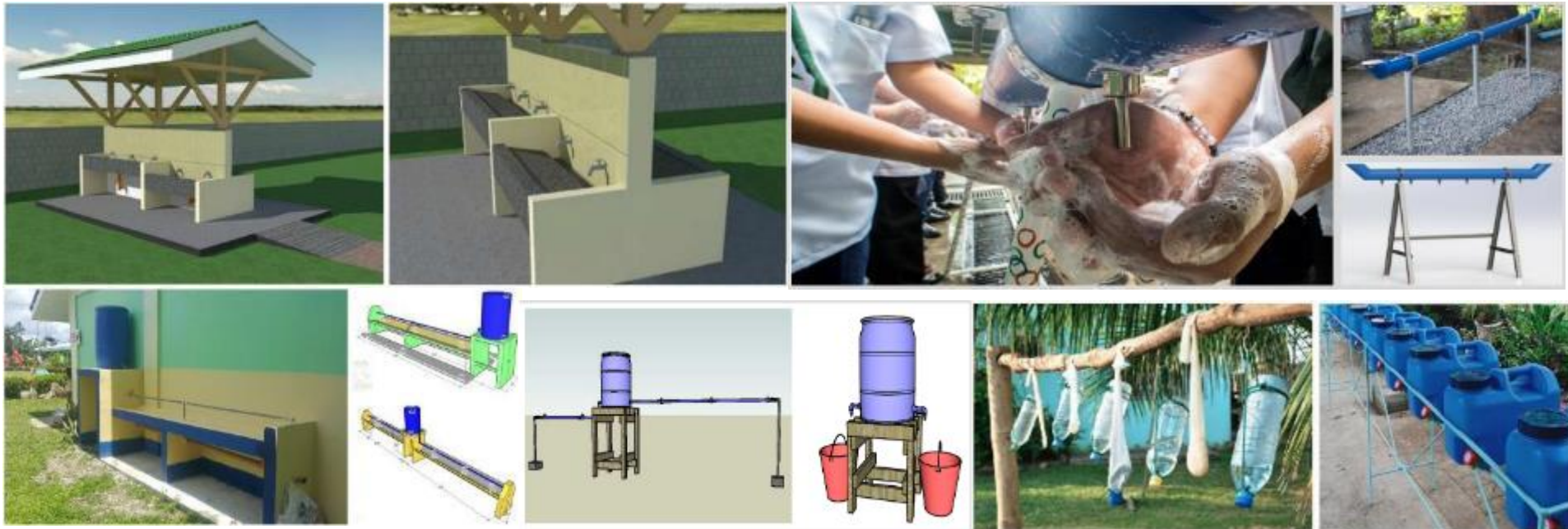
- WASH Resources





# WASH FACILITIES

- Facilities Planning and Development







# WASH TWG

- **Monthly Meetings**
- **Brainstorming Meetings**
- **Planning Meetings**
- **Coordination Meetings with PAS, ICTS, NEAP, EPS, and other Offices**
- **Participation on Education Forum and Education Cluster**
- **Other Meetings**



# REFLECTIONS

- The DepEd WinS Program is designed to achieve learning and health outcomes of Filipino students through a comprehensive, sustainable, and scalable school-based WASH program pursuant to the State's mandate to defend the right of children to dignity, assistance, and protection from conditions that would hamper their development.
- In order to improve planning and implementation of health standards and practices, it is critical that standards for WASH in Schools be monitored and evaluated.
- The significant improvement in WinS Results are due to the active participation of the Regional Offices and School Division Offices and of the WinS Focals.