



WinS Contribution to Disease prevention

Prevention of oral diseases

Dr. Bella Monse, DDS, PhD

Senior Advisor

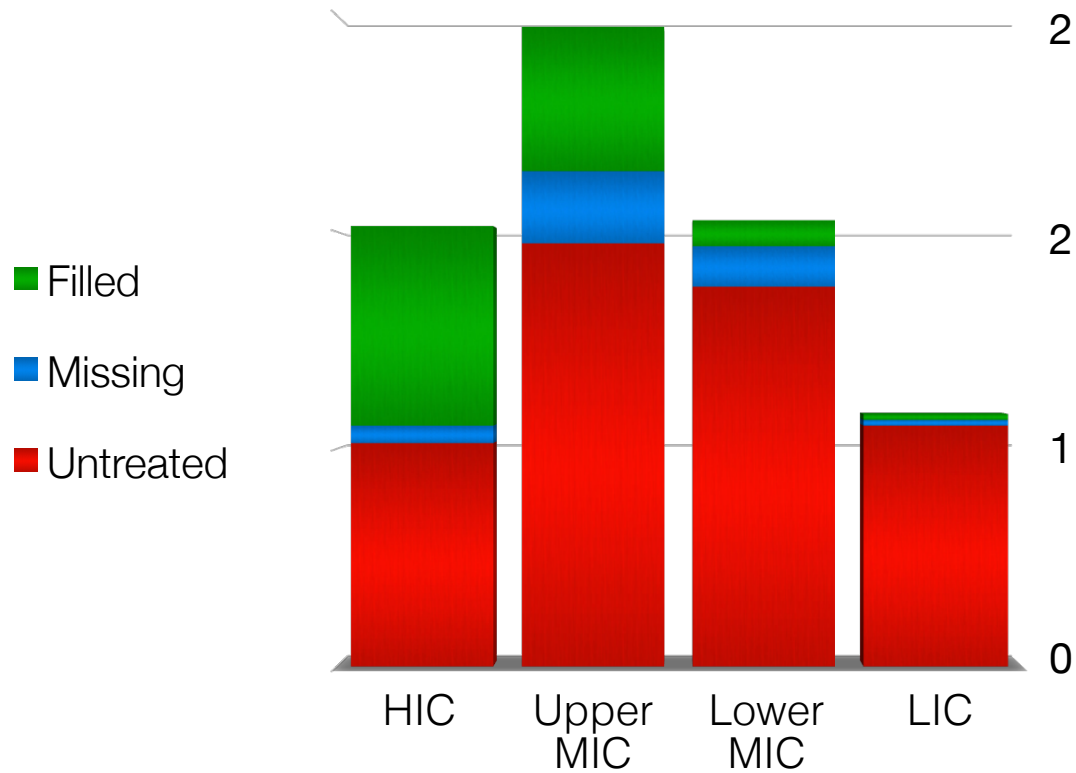
GIZ

Global status of Oral health



- Oral disease affects **3.9 billion people**
- Dental caries most prevalent disease of all the 291 conditions included in the Global Burden of Disease Study of the WB
- Disease with a strong social gradient
- Early onset with first teeth - lifelong problems with cumulative effects
- Pain, eating & sleeping impacts, poor growth development and school performance

Tooth decay remains untreated - worldwide



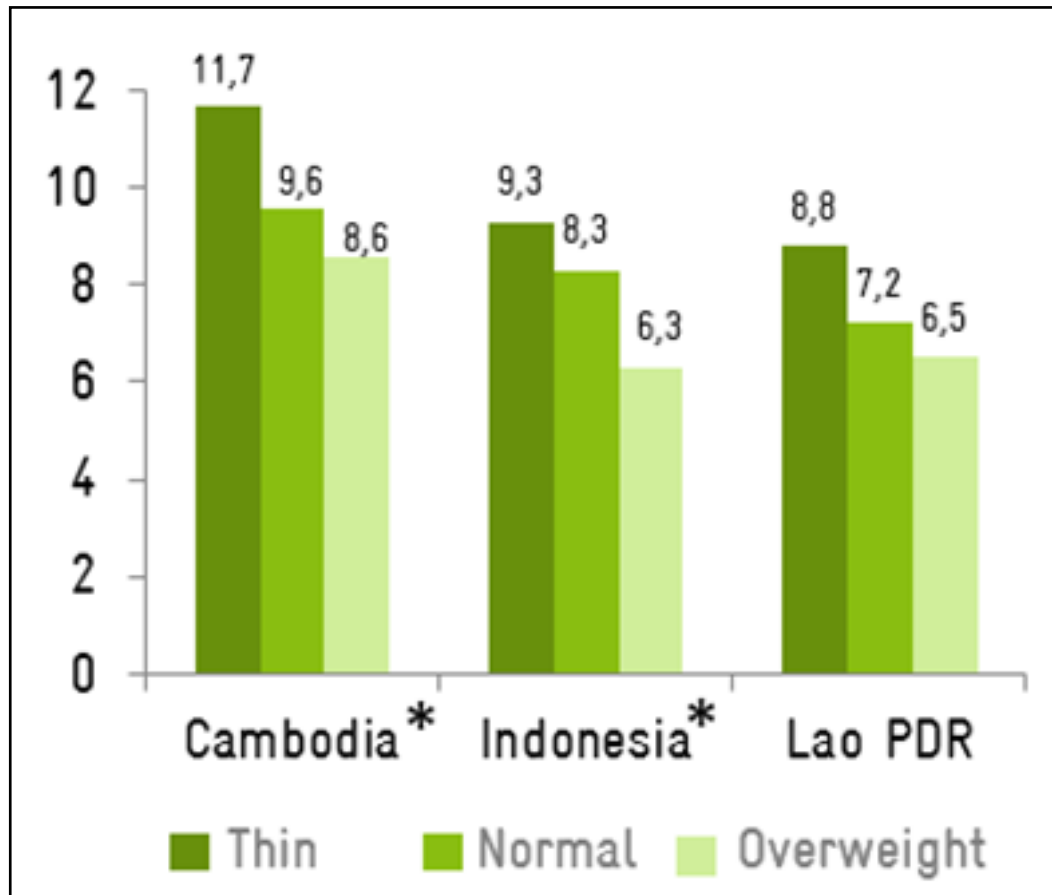
Example: Reality in The Philippines



- 97% of 6-year old children have dental caries
- on average 8 decayed teeth.
- Almost none of the caries is treated.

Impact on Nutritional Status

Number of decayed teeth in 6-year old children



- Underweight children had higher levels of tooth decay

Priority for prevention

- Oral diseases are expensive to treat – no resources
- Treatment is useless if the root causes are not addressed

Prevention and effective self-care are the only realistic options for populations in low-/middle income countries!



Impact of school based TBFT program

Oral health status

	FIT schools	Control schools
Increment in DMFT:	0.48 ± 0.91	0.63 ± 1.12 *

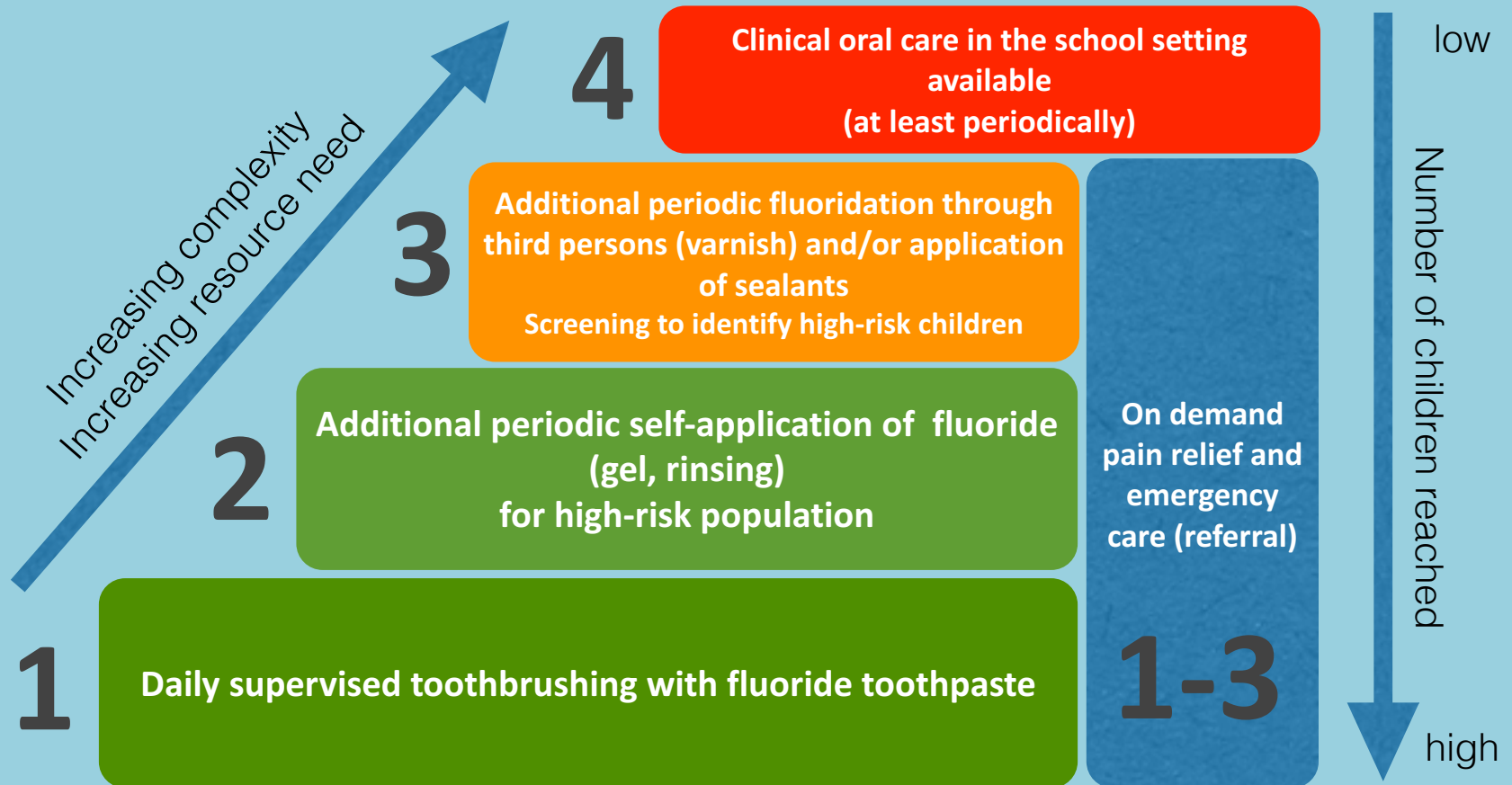
Prevented fraction:

- All countries: 24%
- Cambodia: 18%
- Indonesia: 22%
- Lao PDR: 38%

Cochrane meta-analysis: 24%



Stepwise modules of an oral health promotion programme



Simple - large reach - focus on prevention - availability of essential care

Additional interventions

- Once a week toothbrushing with higher concentrated fluoride gel
- Application of silver diamine fluoride or fluoride varnish
- Application of Fluoride varnish 2 x a year
- Access to oral urgent treatment (OUT)



WinS in the SDGs

Opportunity: Integration of TBFT into advanced service level (hygiene) for countries with high disease burden

Basic drinking water
Drinking water from an **improved** source is **available** at the school

Basic sanitation
Improved facilities, which are single-sex and usable (**accessible, functional, private**) at the school

Basic handwashing
Handwashing facility with **water and soap** at the school

Thank you for your attention

