

Directorate General of Primary and Secondary Education  
Ministry of Education and Culture  
Republic of Indonesia



# INDONESIAN GOVERNMENT INVESTMENT IN WASH IN SCHOOLS

Zulkarnaen Haryo Nugroho

# INDONESIAN EDUCATION SECTOR in Numbers



Republic of Indonesia



**270,393** Schools and Madrasah.

**44,857,295** students and

**3,453,357** teachers

<http://sekolah.data.kemdikbud.go.id/>



# USAHA KESEHATAN SEKOLAH/ MADRASAH

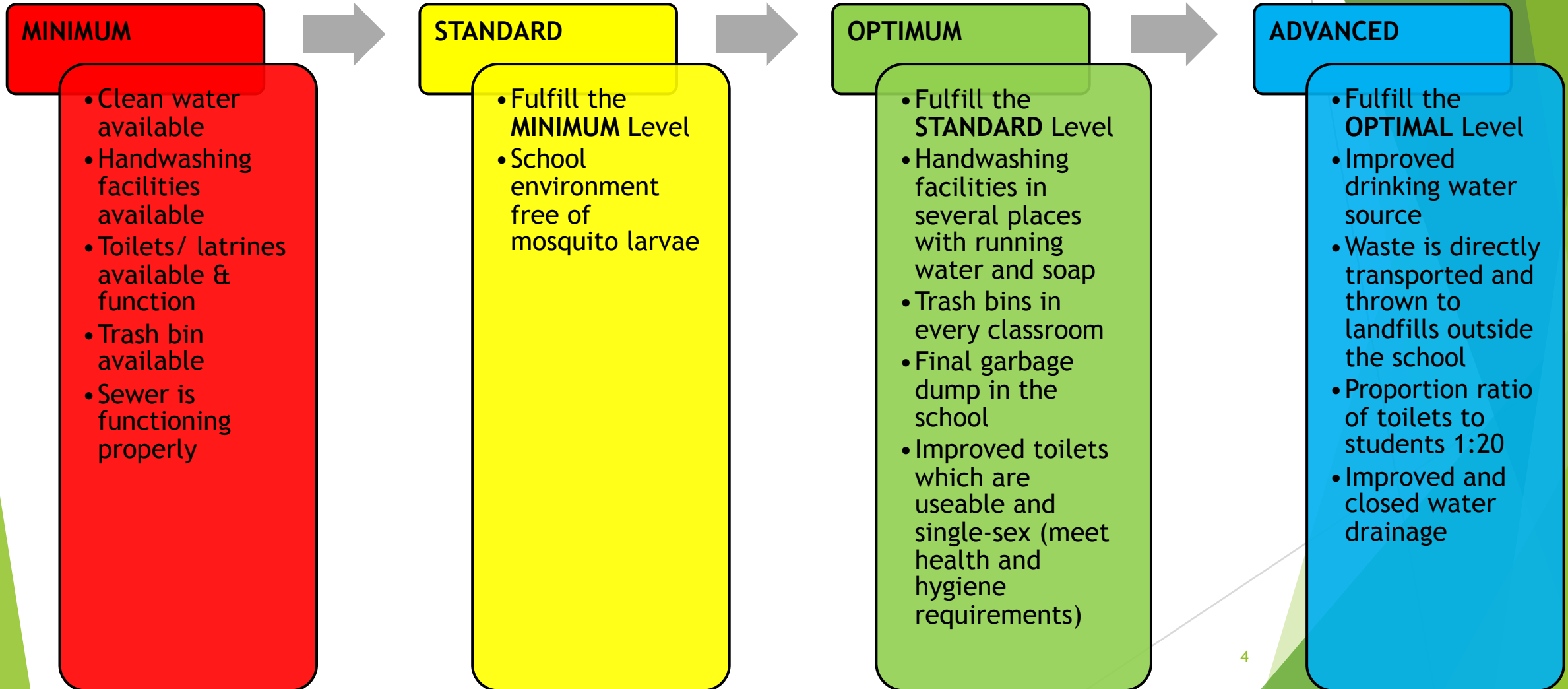
Joint Regulation of the Ministry of Education and Culture, Ministry of Health,  
Ministry of Religious Affair, and the Ministry of Home Affairs year 2014:  
about development and improvement Usaha Kesehatan Sekolah/Madrasah (UKS/M)

## Goals:

To improve the quality of education and learning achievement of students by **increasing clean and healthy living behavior** and **creating a healthy educational environment**, so as to enable the harmonious growth and development of students

WASH in Schools is part of UKS/M Program

# UKS/M Stratification since 2000s



# What Trigger WASH in Schools Investment



## 1. WinS Profile that Shows

Where are we now? Disparities across education level and locations

**AplikasiDapodik** SMAN 1 UBUD - 2017/2018 Genap

Data Rinci Sekolah Sanitasi (2017/2018 Genap)

**Kecukupan air:**  Cukup  Kurang  Tidak ada

**Sekolah memproses air sendiri:**  Ya  Tidak

**Air minum untuk siswa:**  Disediakan sekolah  Tidak disediakan

**Mayoritas Siswa Membawa Air Minum:**  Ya  Tidak

**Jumlah toilet berkebutuhan khusus:** 0

**Sumber air sanitasi:** Ledeng/PAM

**Ketersediaan air di lingkungan sekolah:**  Ada sumber air  Tidak ada

**Tipe jamban:**  Leher angsa (toilet duduk/jongkok)  Cubluk dengan tutup  Jamban menggantung di atas sungai  Cubluk tanpa tutup  T

**Jumlah tempat cuci tangan:** 6

**Apakah sabun dan air mengalir pada tempat cuci tangan:**  Ya  Tidak

<b>Jumlah Jamban Dapat Digunakan:</b>	<b>Jamban Laki-laki:</b>	<b>Jamban Perempuan:</b>	<b>Jamban Bersama:</b>
	6	6	0

<b>Jumlah Jamban Tidak Dapat Digunakan:</b>	<b>Jamban Laki-laki:</b>	<b>Jamban Perempuan:</b>	<b>Jamban Bersama:</b>
	0	0	0

**National Education Management Information System (EMIS)**



## 2. Roadmap That Shows Strategies and Investment Needed to Achieve SDGs on WinS



KEMENTERIAN PENDIDIKAN DAN KEBUDAYAAN  
DIREKTORAT JENDERAL PENDIDIKAN DASAR DAN MENENGAH

### ROADMAP OF SCHOOL SANITATION WITHIN UKS FRAMEWORK 2017



Tabel 3.2 Perhitungan investasi Sanitasi Sekolah untuk semua jenjang

No.	Provinsi	Total Investasi
1	DKI Jakarta	40,914,528,302
2	Jawa Barat	2,029,066,378,738
3	Banten	472,009,486,166
4	Jawa Tengah	1,444,598,903,151
5	DI Yogyakarta	103,400,000,000
6	Jawa Timur	1,914,078,660,834
7	Aceh	417,935,443,787
8	Sumatera Utara	1,024,142,271,415
9	Sumatera Barat	387,506,559,486
10	Riau	348,300,000,000
11	Kepulauan Riau	74,210,000,000
12	Jambi	261,530,000,000
13	Sumatera Selatan	456,543,481,990
14	Bangka Belitung	47,510,000,000
15	Bengkulu	148,910,000,000
16	Lampung	489,884,936,170
17	Kalimantan Barat	422,681,695,761
18	Kalimantan Tengah	292,520,000,000
19	Kalimantan Selatan	260,960,000,000
20	Kalimantan Timur	170,267,089,202
21	Kalimantan Utara	50,220,000,000
22	Sulawesi Utara	252,966,388,889
23	Gorontalo	92,788,771,930
24	Sulawesi Tengah	342,421,625,616
25	Sulawesi Selatan	659,179,240,283
26	Sulawesi Barat	167,121,250,000
27	Sulawesi Tenggara	298,630,000,000
28	Maluku	236,524,847,328
29	Maluku Utara	180,697,796,610
30	Bali	180,998,490,566
31	Nusa Tenggara Barat	356,101,074,919
32	Nusa Tenggara Timur	603,578,658,537
33	Papua	288,121,720,930
34	Papua Barat	119,380,000,000
	Indonesia	14,830,699,300,607

Sumber: Analisis Investasi

USD 1,044,415,444





# What are the challenges

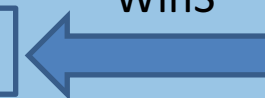


- **National Government Allocation (APBN)**

- National Government Support (Bantuan Pemerintah)

- School Operational Fund: allocated for activities & WASH O&M

WinS



- **Local Government (Province and District) Allocation (APBD)**

- General Allocation Fund (DAU)

- Special Allocation Fund (DAK): allocated for new latrine construction & rehabilitation

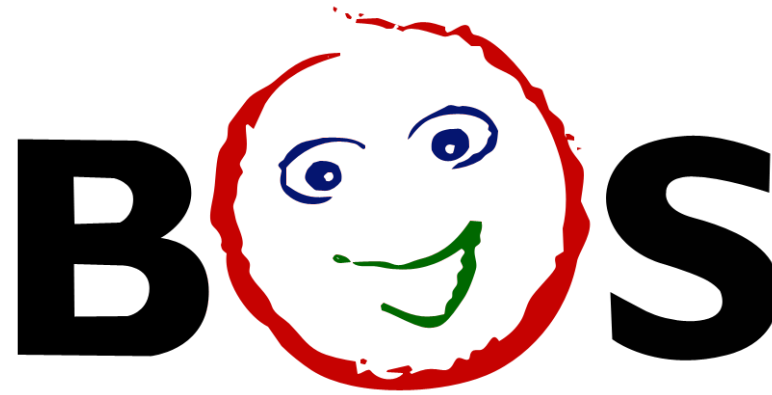
WinS



How to Align with Existing Financial Instrument For Education Sector



## School Operational Fund



- Introduced in 2005
- To cover personnel and non-personnel cost at school level
  - Personnel (additional teachers, admin staffs, janitor etc)
  - Non Personnel : consumables, power, water, telecommunications, minor repairs, overtime, transport, consumption, tax, insurance, etc)

Since 2017 :

WASH in Schools → eligible costing line on BOS

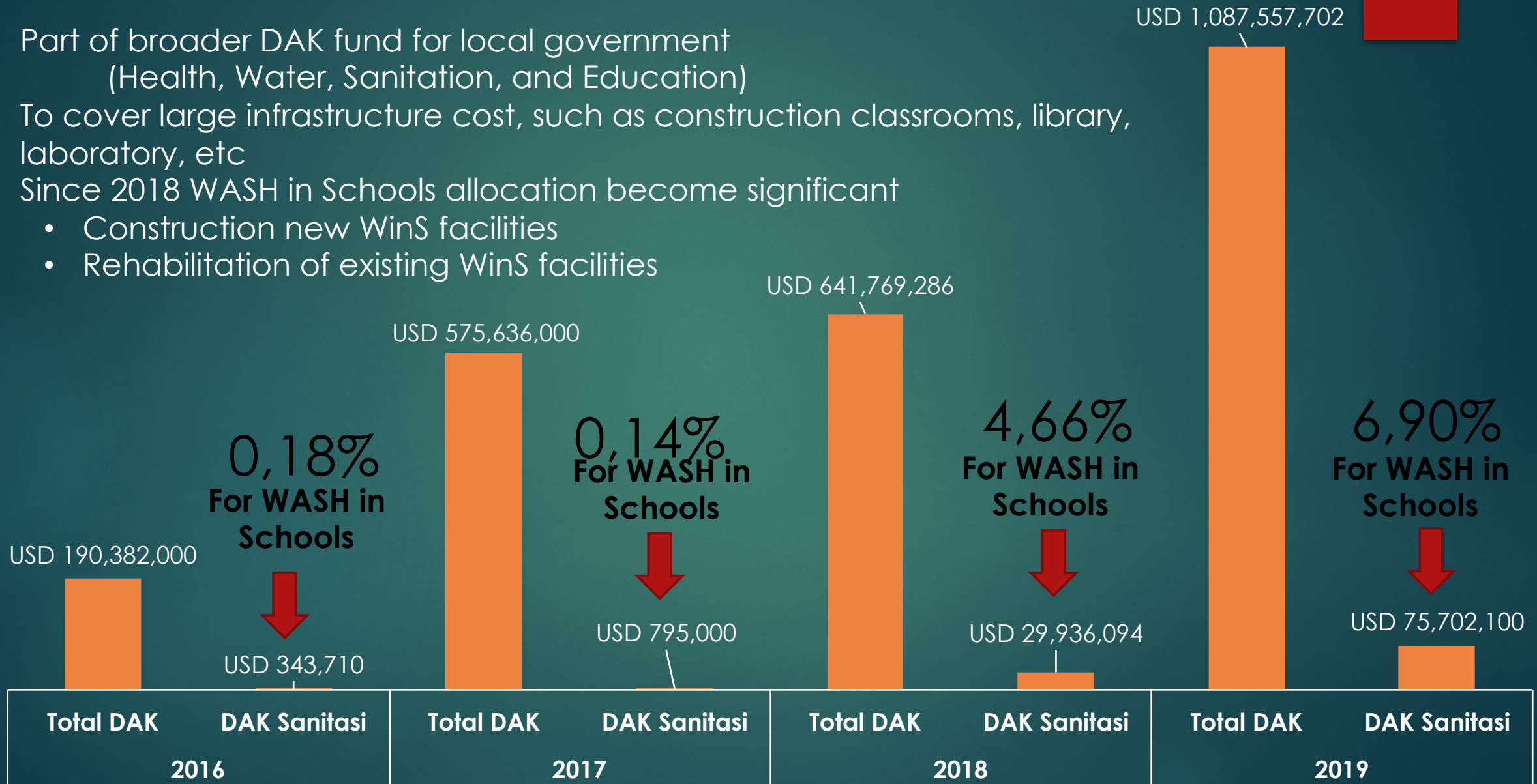
- Activities, such as handwashing
- Operation and maintenance of WinS facilities
- Small rehabilitation

Level	BOS per Student Annually
Primary Education (SD/MI)	USD 57
Secondary Education (SMP/MTs)	USD 71,5
Higher Education (SMA/MA)	USD 100
Vocational Education	USD 114
Special Education	USD 143



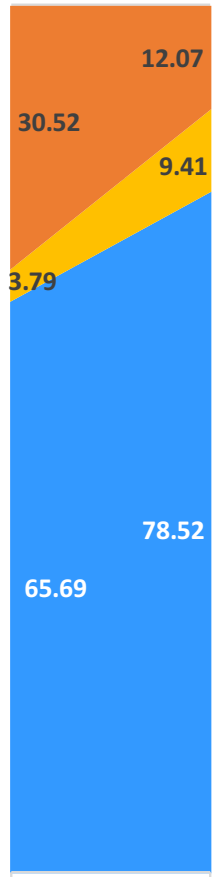
# Special Allocation Fund for Education Sector (DAK)

- Part of broader DAK fund for local government (Health, Water, Sanitation, and Education)
- To cover large infrastructure cost, such as construction classrooms, library, laboratory, etc
- Since 2018 WASH in Schools allocation become significant
  - Construction new WinS facilities
  - Rehabilitation of existing WinS facilities

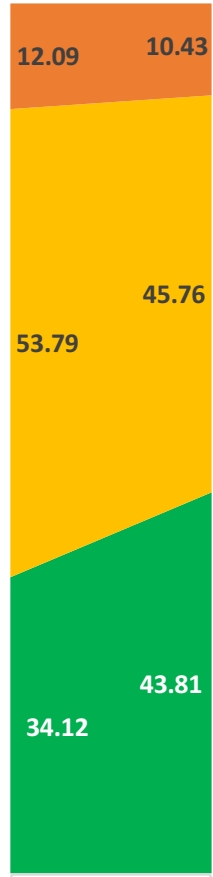


# Improvement of Access to WinS facilities 2017 vs 2019

Water



Sanitation



Hygiene



Toilet Ratio

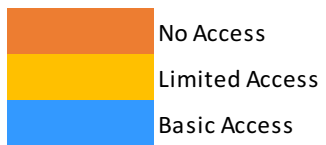


2017	2019	2017	2019
122	107	117	101

2017 2019

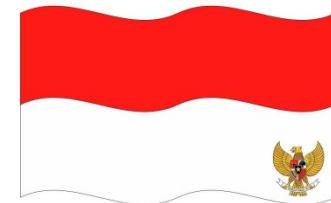
2017 2019

2017 2019



## What advise to other countries

- Data driven policy advocacy
- Maximizing or make use of existing government program platform --> UKS/M
- Insert WinS on the existing government financial instrument --> BOS and DAK



Republic of Indonesia

# Thank You Salamat Terima Kasih



unicef

