



WinS Policy and Governance at Provincial level

Resource Person's Name: Dr. Fouzia Khan

Position: Chief Advisor, Curriculum Wing

Organization: School Education & Literacy Department, Government of
Sindh



Pakistan Context



- After 18th Amendment of the Constitution of Pakistan in 2010

As a result;

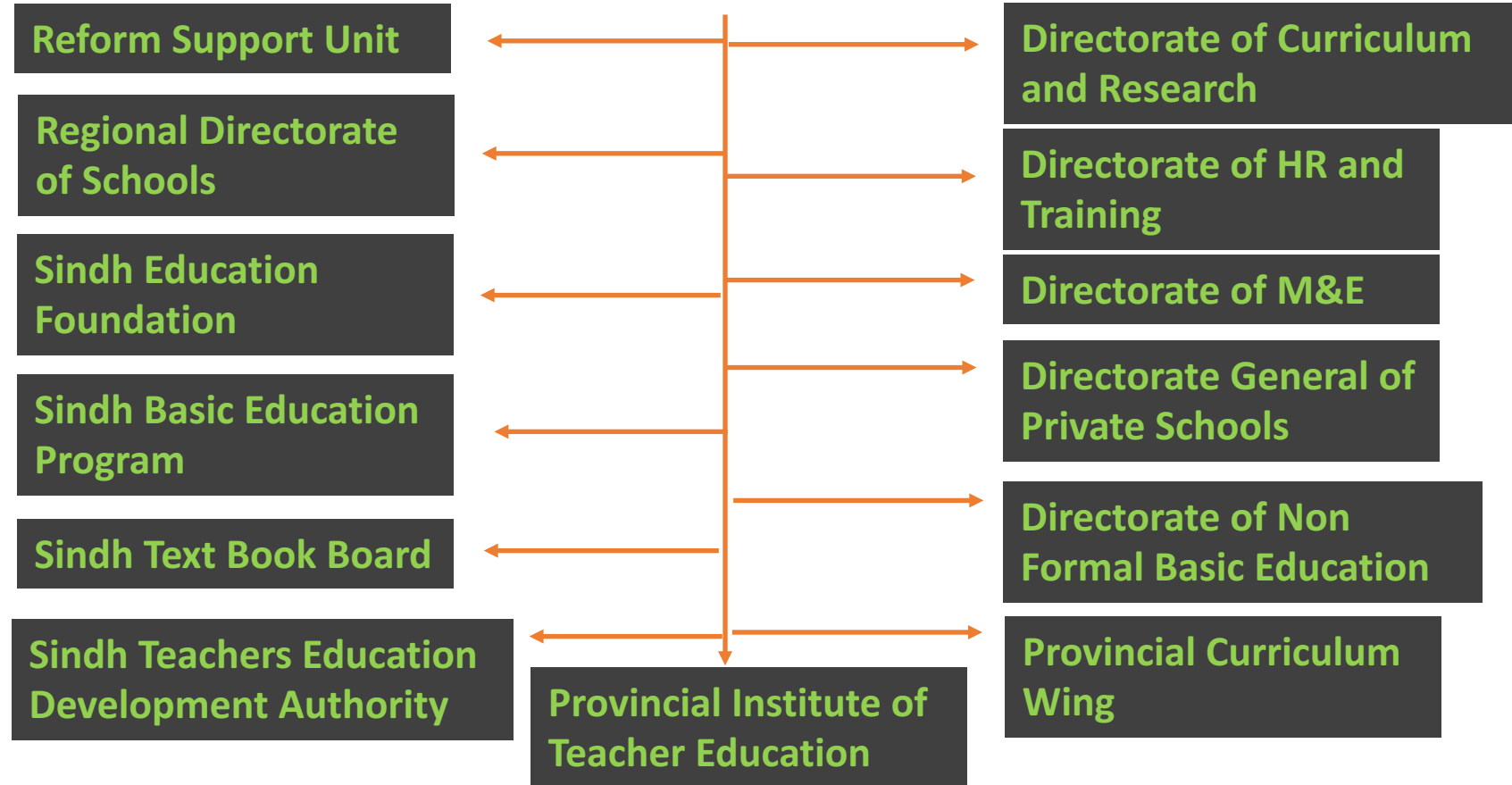
- The Ministry of Education devolved to provinces. Provincial government are autonomous for policy formulation and governance of education (a decentralized accountabilities for service delivery Model).
- **Education and Literacy Department, Government of Sindh.**



Governance Structure - SELD, Sindh



School Education and Literacy Department

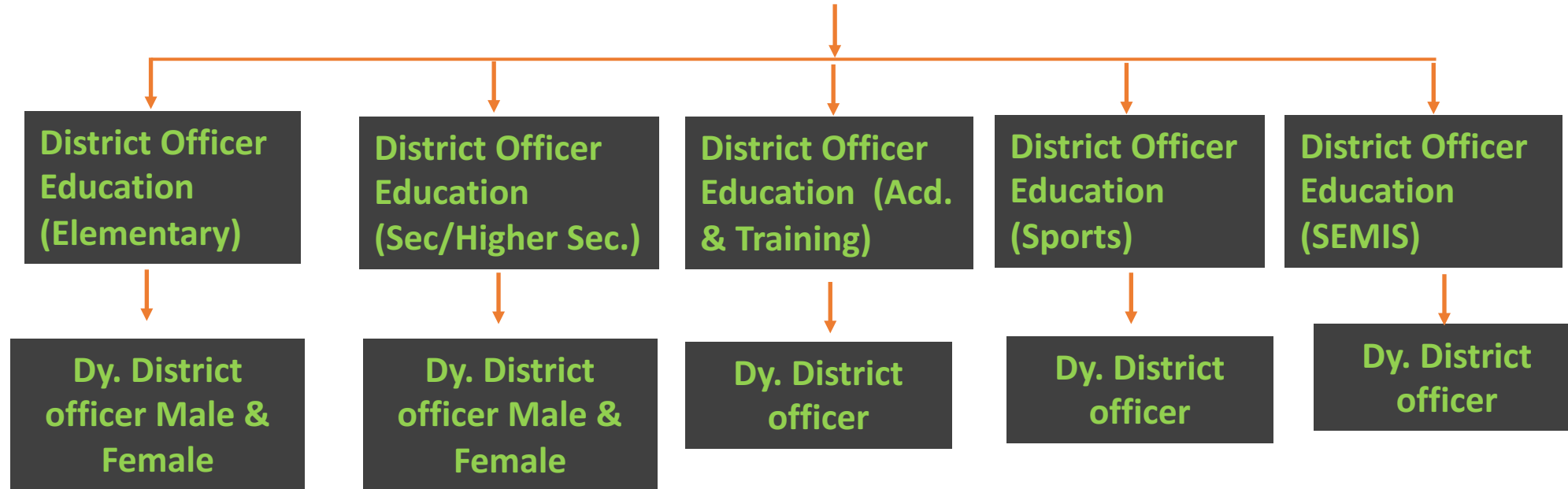




Governance Structure – District Education office



District Education Officer- BPS 20



Primary Schools Profile 2019 - INFRASTRUCTURE

08

SINGLE TEACHER SCHOOLS

17000+ (40%) One Teacher Schools
 Enrollment: 870,000 Students
 31.2% One room & One Teacher
 2% meet minimum quality criteria.
 (Rooms, Teachers, STR, Basic facilities)

01

SCHOOLS

Total Schools: 49,103
 Functional Schools: 36,656
 Non Functional : 12,445

02

ENROLMENT

Total Enrollment: 4.5 Million
 Primary Enrollment: 2.9 Million
 Girls: 1.2 Million , Boys: 1.7 Million
 Private Schools Enrollment: 1.4 Million (31%)

07

SCHOOLS

Total FUNCTIONAL; 36,656
 PRIMARY: 3,2424
 MIDDLE SCHOOLS: 1,513
 ELEMENTARY : 680
 HIGHER SECOONDAYR: 2026

06

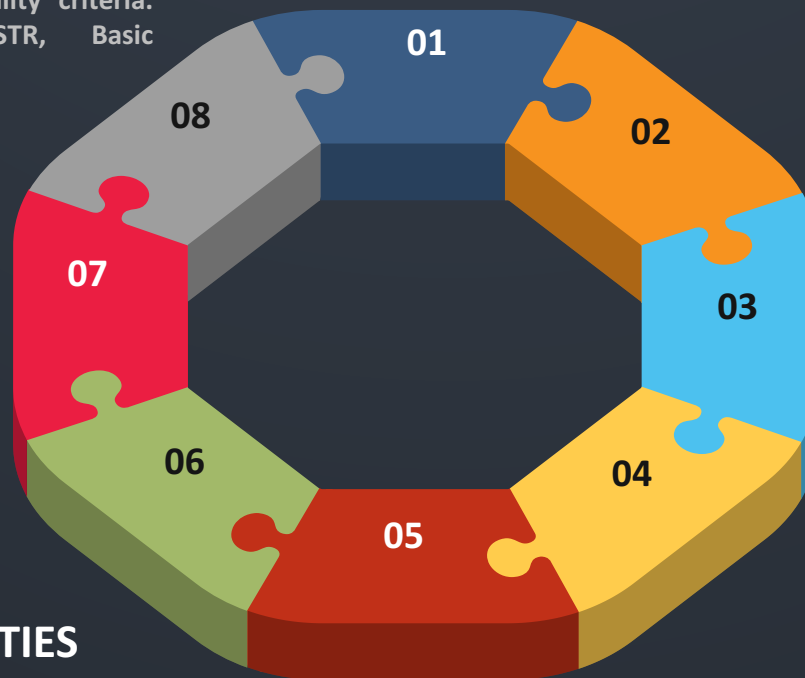
GENDER

36,656 Functional Schools
 17.4% Boys Schools
 12.3% Girls Schools
 70% Mixed Schools

05

SCHOOL FACILITIES

WITH BUILDING: 33,315
 SHELTERLESS: 3,331
 DANGEROUS: 6,441
 DRINKING WATER: 21,304
 BOUNDARY WALL: 23,447
 WASH ROOM: 26,223
 ELECTRICITY : 16,405



03

TEACHERS

133,070 Teachers
 26.1% Female Teachers
 73.4% Male Teachers

04

SCHOOL CAPACITY

- SINGLE ROOM: 7,185,
- TWO ROOMS: 14,573
- MULTIPLE ROOM: 1,345



Issues in WinS Governance



- Government formal procedures for education reforms are complex and lengthy .
- Utilization of annual Budget allocation for Education department especially development budget.
- The education infrastructure has challenges since decades due to low Operation & Maintenance allocations to schools.
- HR capacity issues in the education system.

CONSOLIDATION/ CLUSTERING OF SCHOOLS

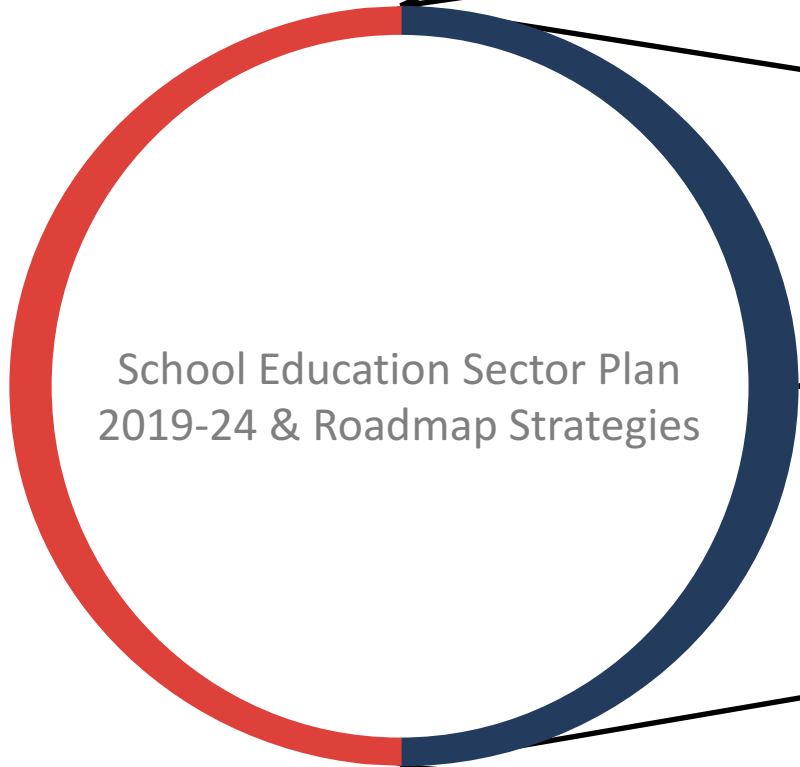
TO IMPROVE QUALITY OF EDUCATION WITH DECENTRALISED HUMAN RESOURCE MANAGEMENT AND TEACHERS TRAINING, SELD HAS ALREADY CREATED CAMPUS SCHOOLS AND CLUSTERS WITH HUB SCHOOLS.

SR. NO	MAIN	MERGED SCHOOLS / FEEDER
CAMPUS SCHOOLS (COMPLETED)	1,349	2,745
CLUSTERS (IDENTIFIED)	26,07	26,483
PROPOSED TO BE MERGED (IDENTIFIED CAMPUS)	5,107	
REMAINING SCHOOLS NOT UNDER ANY CLUSTER	7,967	

CLUSTERING POLICY DOES NOT ATTAIN ALL THE SCHOOLS

REVISED POLICY FOR DECLARING UCs AS CLUSTERS AND IDENTIFY HUB SCHOOLS IN EACH UC. CELLS IN EACH SCHOOLS WILL BE IDENTIFIED FOR FUTURE EXPANSION/UPGRADATION

SUMMARY FOR REVISED CLUSTERING POLICY WILL BE INITIATED



School Education Sector Plan
2019-24 & Roadmap Strategies

Program 1	Out of school children and illiterate youth	
Program 2	Adequate and equitable provision of school infrastructure	
Program 3	Equitable enrolment and retention	

Equitable Access

Program 4	Teacher recruitment, qualifications and professional development	
Program 5	Quality inputs and processes	

Quality Learning

Program 6	Professional educational leadership and management cadre	
Program 7	Improved resource allocation and utilisation	
Program 8	Effective strategic planning and M&E	

Effective Governance

Cross Cutting Themes

- Equity: Gender, Geographic & Special Needs
- Learning Outcomes
- Capacity Building



Solutions / Achievement



- A WINS Strategy developed and approved by government
- A working group formed to expedite the action required for WinS reforms in the province.
- Developing scalable models for improving the school infrastructure.
- roll out and implementation of WinS standards.
- Capacity development of the HR on WINS and MHM through training plans and further rollout to districts and schools.
- Gaps identification through revised SEMIS to inform decision making.



Thanks



Questions?

