



PHILIPPINE BASIC EDUCATION SYSTEM

BRIEFER

DISCUSSION POINTS



- i. Country Overview
- ii. Mandate and Scope of Services
- iii. Ladder of Priorities
- iv. Governance Structure
- v. Management Relationships



COUNTRY OVERVIEW



Capital	Manila
Area	300,000 sq km
Coastline	830 sq km
Languages & Dialects	175 indigenous and 8 non-indigenous
Type of Government	Presidential Republic
Government branches	Executive, Legislative, Judicial
Administrative/ Political Divisions	17 regions , 81 provinces, 145 cities, 1,489 municipalities, 42,036 barangays/ villages
Legal System	Mixed Legal System (Civil, Common, Islamic, Customary Law)
Type of Economy	Mixed or Dual Economy
Agriculture Products	Rice, Fish, Livestock, Poultry, Bananas, Coconut/Copra, Corn, Sugarcane, Mangoes, Pineapple, Cassava
Industries	Semiconductors and Electronics Assembly, Food and Beverage Manufacturing, Construction, Electric/Gas/Water Supply, Chemical Products, Radio/ Television/ Communications Equipment and Apparatus, Petroleum and Fuel, Textile and Garments, Non-Metallic Minerals, Basic Metal Industries, Transport Equipment
Population	103,796,831 (2017 estimate) (Census conducted every 5 yrs)
Average Growth Rate	1.59%



MANDATE AND SCOPE



Mandate

The Department of Education **formulates, implements, and coordinates policies, plans, programs and projects** in the areas of **formal and non-formal** basic education.

It **supervises** all elementary and secondary education institutions, including alternative learning systems, both public and private; and **provides for the establishment and maintenance of a complete, adequate, and integrated system of basic education** relevant to the goals of national development.

Vision

We dream of Filipinos who **passionately love their country** and whose values and competencies enable them to **realize their full potential and contribute meaningfully** to building the nation. As a learner-centered public institution, the **Department of Education continuously improves itself** to better serve its stakeholders.

MANDATE AND SCOPE



Core Values

Maka-Diyos

God-fearing

Makatao

Pro-People

Makalikasan

Environment-friendly)

Makabansa **Nationalistic**

Mission

To protect and promote the right of every Filipino to quality, equitable, culture-based, and complete basic education where:

- Students learn in a child-friendly, gender-sensitive, safe, and motivating environment.
- Teachers facilitate learning and constantly nurture every learner.
- Administrators and staff, as stewards of the institution, ensure an enabling and supportive environment for effective learning to happen.
- Family, community, and other stakeholders are actively engaged and share responsibility for developing life-long learners.

MANDATE AND SCOPE

Number of Schools by Classification SY 2018-2019



Total No. of Schools

61,896

ALL SECTOR (Public and Private)

CLASSIFICATION	No. of Schools
Elementary	45,410
Junior High School	1,973
Senior High School	1,406
JHS with SHS	7,169
Integrated School (K to G10)	2,696
Integrated School (K to G12)	3,242
Total Number	61,896

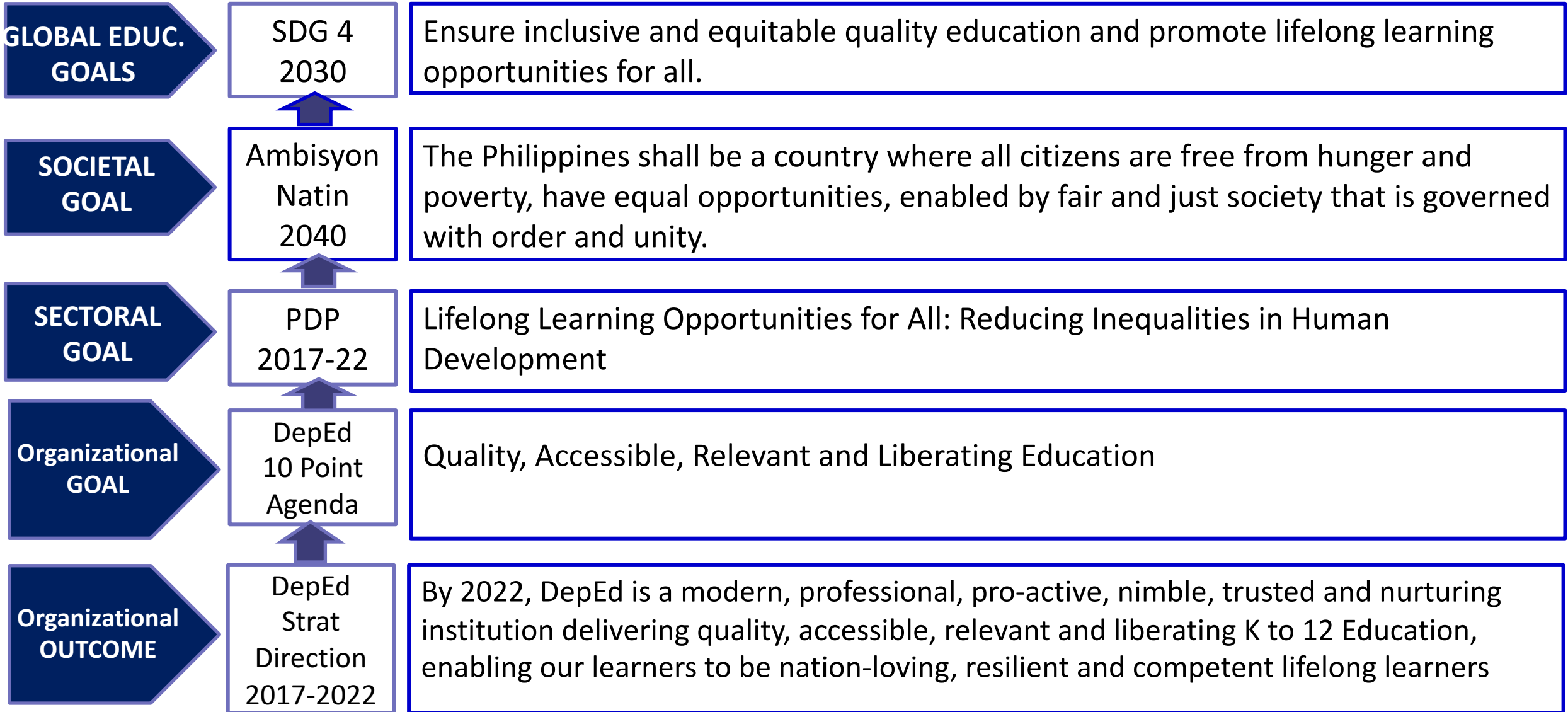
MANDATE AND SCOPE



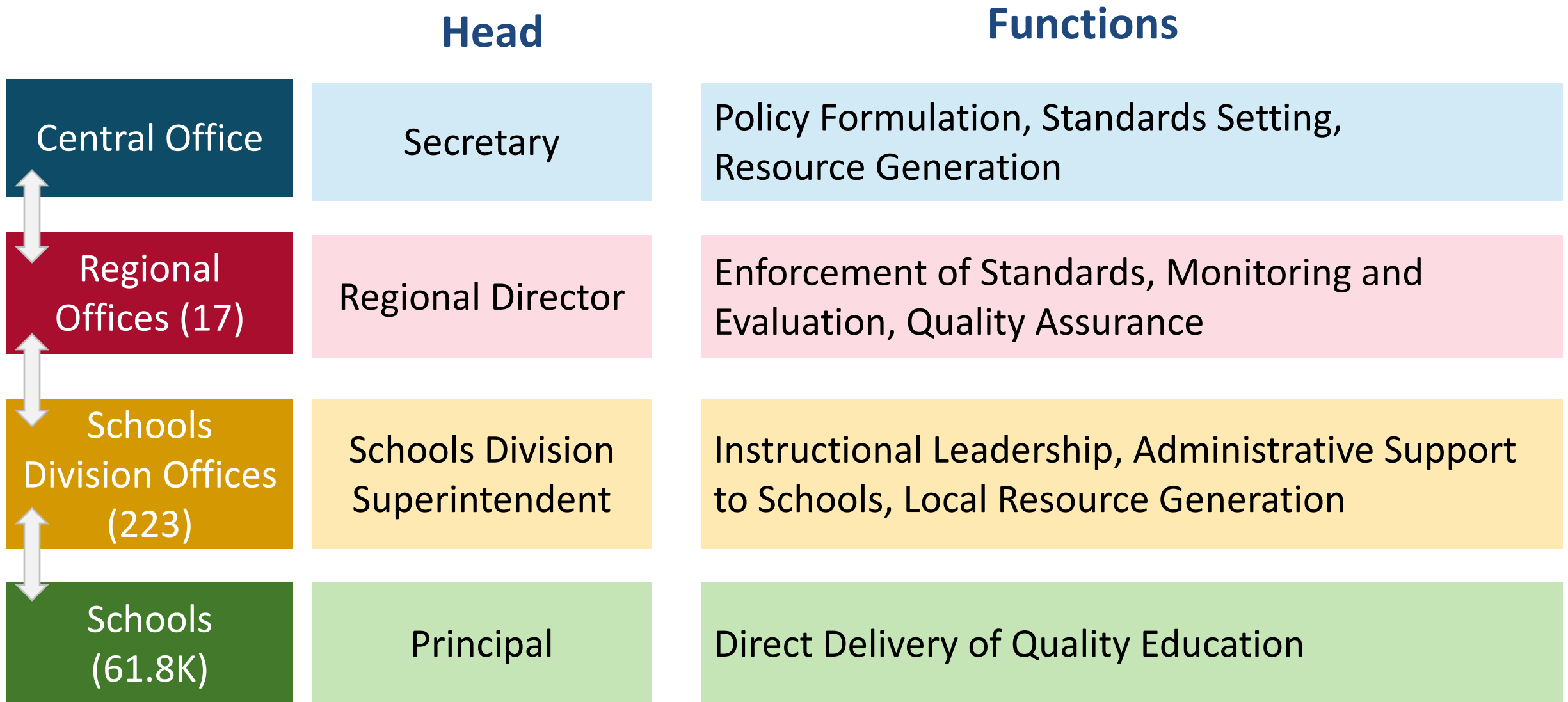
Enrolment, SY 2018-2019

Sector	Kinder	Elementary (Grade 1-6)	Junior High School	Senior High School	Sub-Total	
			(Grade 7-10)	(Grade 11-12)		
Public	2,110,675	12,007,577	6,840,249	1,599,637	22,558,138	81%
Private	296,266	1,240,532	1,421,817	1,339,951	4,298,566	15%
SUCs/LUCs	1,517	10,299	54,229	82,268	148,313	1%
PSO	1,324	6,851	4,332	985	13,492	0.05%
Total (Formal)	2,409,782	13,265,259	8,320,627	3,022,841	27,018,509	97%
	Alternative Learning System				823,013	3%
National TOTAL:	2,409,782	13,265,259	8,320,627	3,022,841	27,841,522	

LADDER OF PRIORITIES



GOVERNANCE STRUCTURE

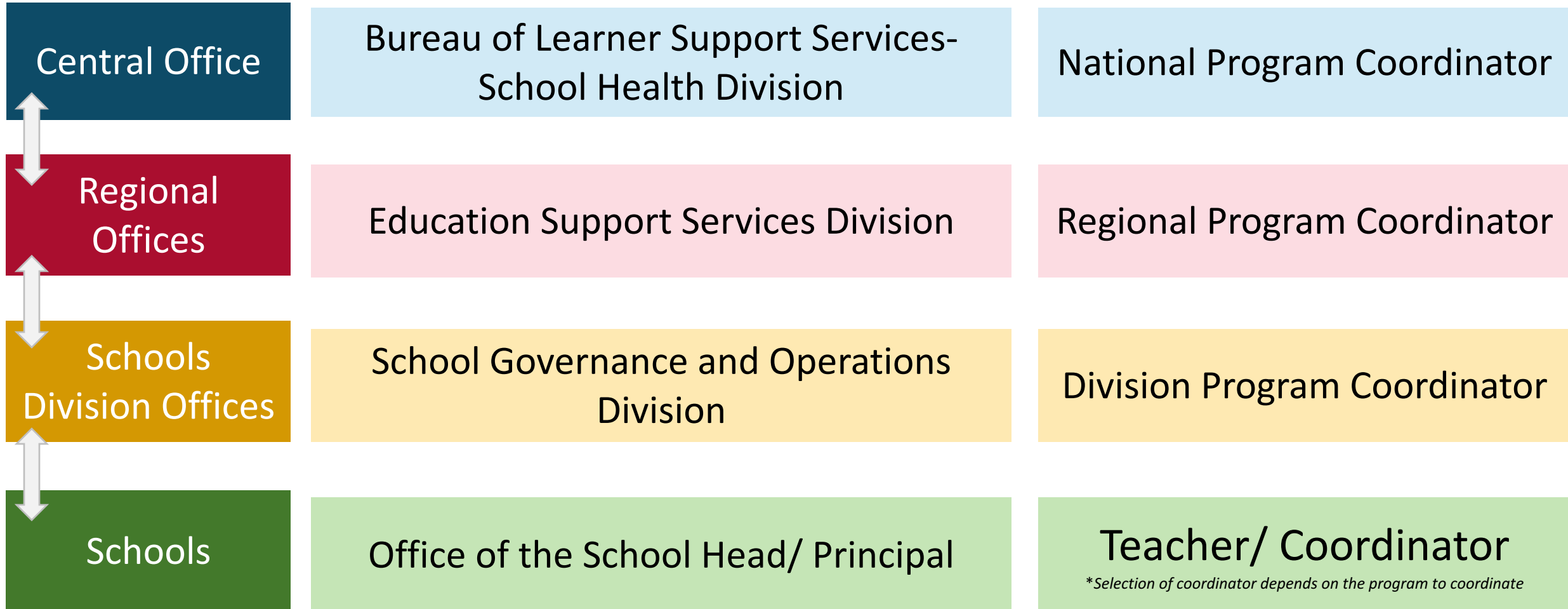


STRUCTURE IN HEALTH PROGRAM IMPLEMENTATION



Implementing Units

Program Implementers





K

to

12

Every Filipino has access to a complete quality basic education.

Every graduate is prepared for further education and the world of work.

The delivery of basic education services to learners is effective, efficient and collaborative.